



Chipping Norton, NSW

18 Aylesbury Crescent

4
BED

2
BATH

2
CAR

RealEquity
estate agents

Presented with absolute perfection and modernised to appeal to the most astute of buyers, this impeccable residence combines the ideal floorplan with separate living areas, inviting entertaining spaces and a huge backyard perfect for the kids or perhaps a granny flat to earn an extra income.

Features

- Beautifully manicured gardens & grounds
- An extremely appealing streetscape
- Open plan lounge & dining + study nook
- Large Galley style kitchen with timber finishes

SOLD - \$997,500

Contact:

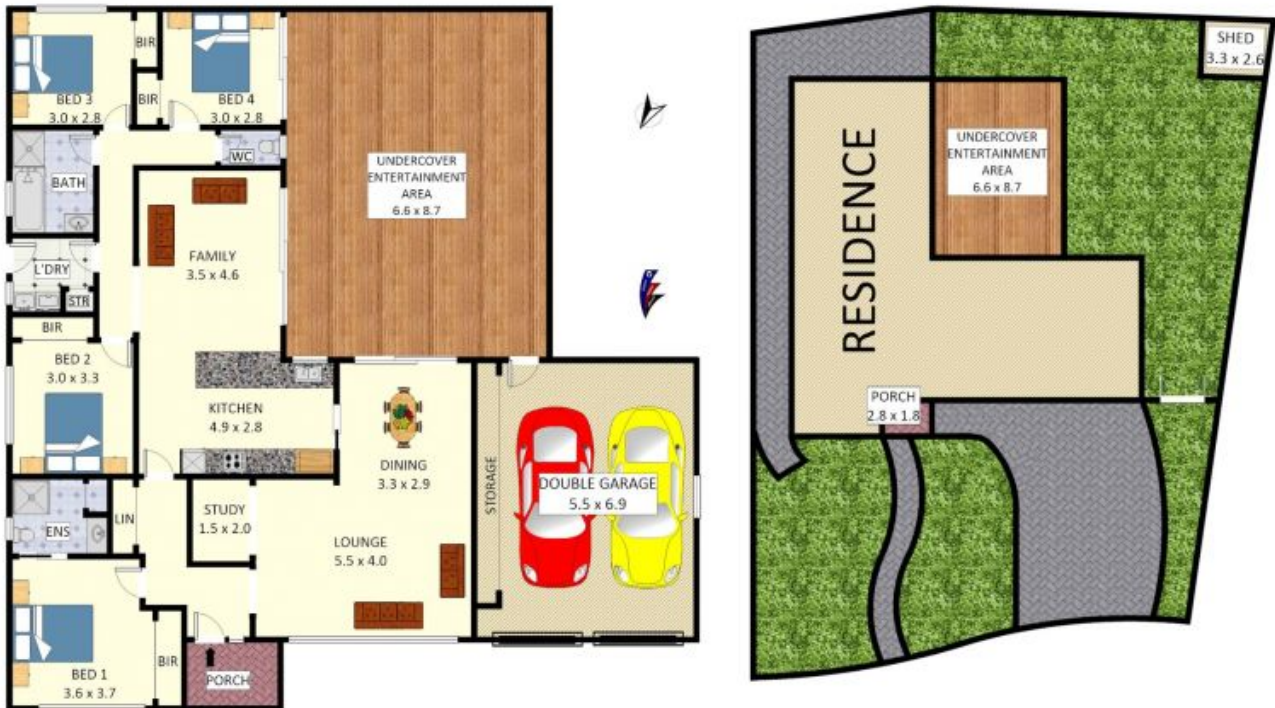
Joshua Prestia
02 9755 4222
0404 252 695
Anthony Prestia
02 9755 4222
0414 775 577

Type: House

Sold Date: 20/07/2018

Land: 725m2

<https://www.realequity.com.au>



Disclaimer: Plans shown are for presentation purposes and are not part of any legal document. All measurements and figures are approximate. Floor Plans by MUS: 0404 538 655

Plans shown are only indicative of layout. Dimensions are approximate.

Chipping Norton, NSW
18 Aylesbury Crescent