



Chipping Norton, NSW
13/6 Mead Drive

2 BED **1** BATH **1** CAR



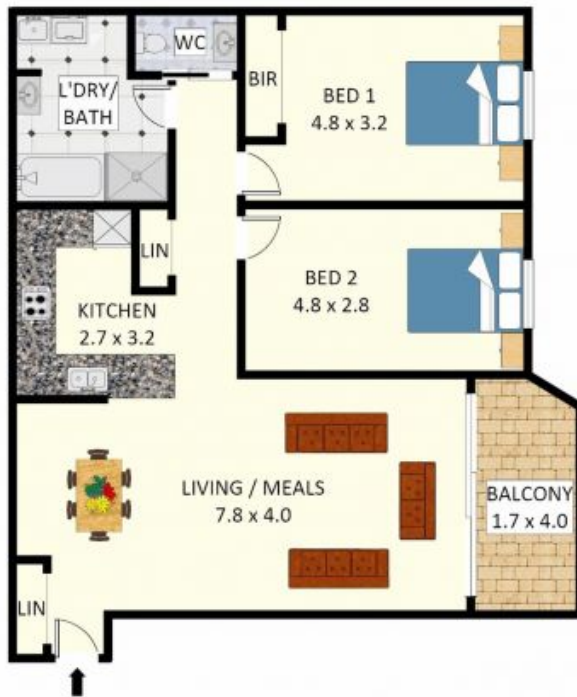
Ideally elevated ground floor position, functional floorplan and neutral colours throughout; this delightful apartment offers resort style surroundings with a fantastic opportunity for the first home buyer, downsizer or perhaps the investor looking to add a great property to their portfolio.

- Features:
- Spacious open plan living and dining
 - Lovely balcony extending off living area
 - Large kitchen with gas cooking
 - 2 generous size bedrooms, 1 with built in

\$475,000 - \$495,000

Contact: Anthony Prestia
02 9755 4222
0414 775 577
Joshua Prestia
02 9755 4222
0404 252 695

Type: Unit
Sold Date: 03/08/2018
Land: 102m2
https://www.realequity.com.au



Disclaimer: Plans shown are for presentation purposes and are not part of any legal document. All measurements and figures are approximate. Floor Plans by MUS: 0404 538 655

Plans shown are only indicative of layout. Dimensions are approximate.

Chipping Norton, NSW
13/6 Mead Drive