



Chipping Norton, NSW

16/6 Mead Drive

2
BED

1
BATH

1
CAR

RealEquity
estate agents

Perfectly elevated ground floor unit positioned within a lovely complex; this inviting unit presents beautiful spacious interiors and the perfect Lakeside location that has created a very comfortable low maintenance lifestyle and a fantastic opportunity for the first home buyer, downsizer or perhaps the investor looking to add a great property to your portfolio.

Features

- New style lounge and dining with tiled floor throughout
- Lovely balcony extending off living area
- New presented kitchen, stainless steel appliances
- 2 spacious bedrooms with built in wardrobe

\$425,000 - \$435,000

Contact:

Anthony Prestia
02 9755 4222
0414 775 577
Joshua Prestia
02 9755 4222
0404 252 695

Type:

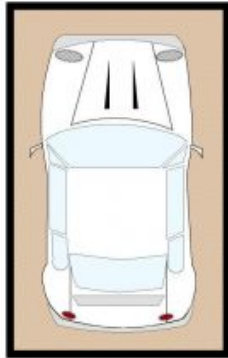
Apartment

Sold Date:

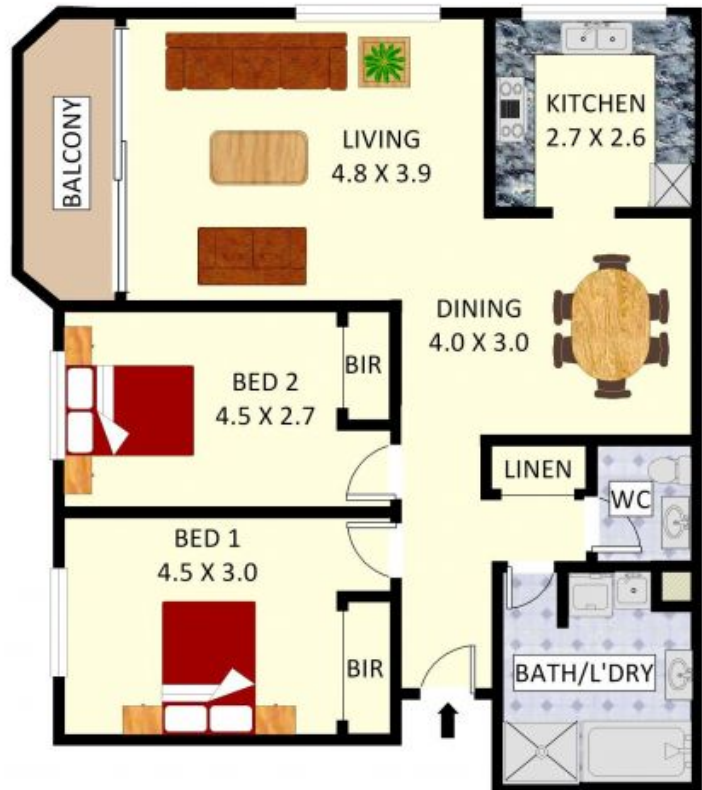
12/08/2019

<https://www.realequity.com.au>

16/6 Mead Drive,
Chipping Norton



SECURE GARAGE: 3.0 X 5.6



Disclaimer: Plans shown are for presentation purposes and are not part of any legal document. All measurements and figures are approximate. Floor Plans by FARRIS: 0455 905 945

Plans shown are only indicative of layout. Dimensions are approximate.

Chipping Norton, NSW
16/6 Mead Drive