



RealEquity



Chipping Norton, NSW

27/8 Mead Drive

2
BED

1
BATH

1
CAR

RealEquity
estate agents

\$420,000 - \$435,000

Contact: Anthony Prestia
02 9755 4222
0414 775 577
Joshua Prestia
02 9755 4222
0404 252 695

Type: Unit

Sold Date: 31/05/2019

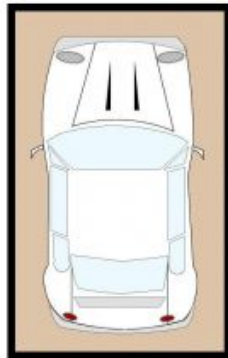
<https://www.realequity.com.au>

Contemporary appeal with fresh inclusions creates an ideal residence with a tranquil setting and situated on the ground floor offering plenty of natural sunlight, this is a great opportunity to the most astute of buyers.

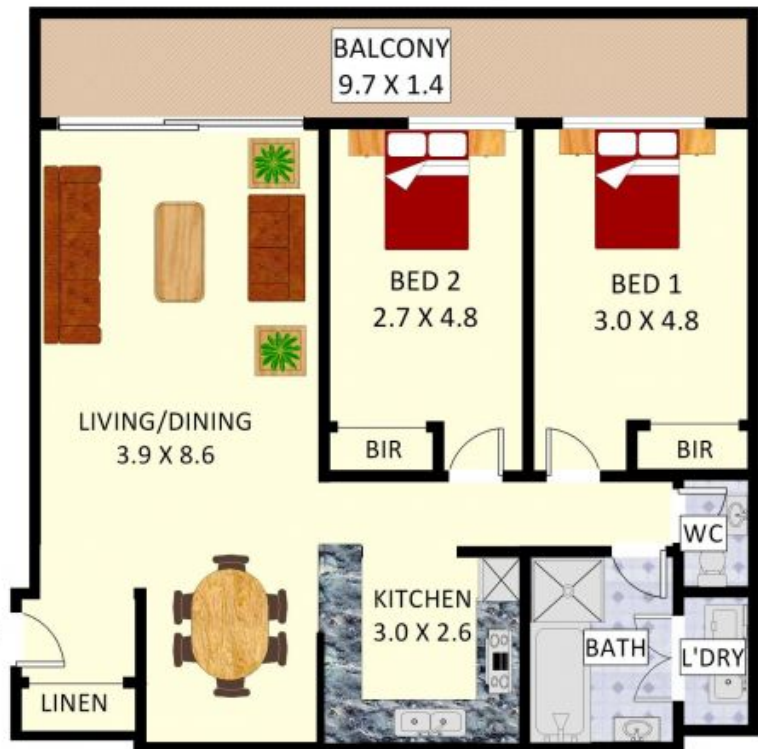
Features:

- Open plan, spacious living & dining area
- Good size kitchen with ample storage
- 2 great size bedrooms with built in robes
- Stylish main bathroom with internal laundry
- Double entertainer's balcony off the living area
- Single carspace in a security building

27/8 Mead Drive,
Chipping Norton



SECURE GARAGE: 2.7 X 5.6



Disclaimer: Plans shown are for presentation purposes and are not part of any legal document. All measurements and figures are approximate. Floor Plans by FARRIS: 0455 905 945

Plans shown are only indicative of layout. Dimensions are approximate.

Chipping Norton, NSW
27/8 Mead Drive