



RealEquity



Chipping Norton, NSW
27/8 Mead Drive

2 BED **1** BATH **1** CAR



Contemporary appeal with fresh inclusions creates an ideal residence with a tranquil setting and situated on the ground floor offering plenty of natural sunlight, this is a great opportunity to the most astute of buyers.

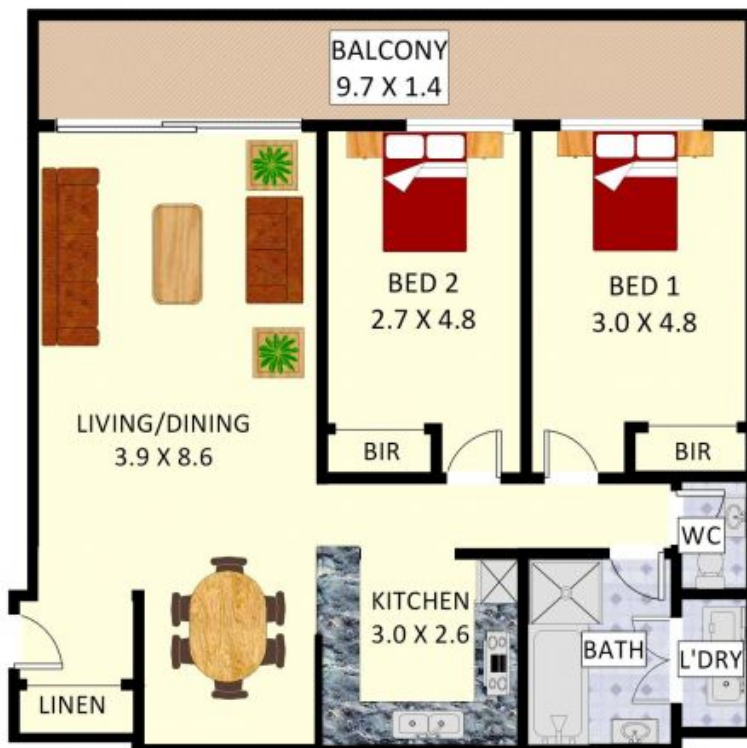
- Features:
- Open plan, spacious living & dining area
 - Good size kitchen with ample storage
 - 2 great size bedrooms with built in robes
 - Stylish main bathroom with internal laundry
 - Double entertainer's balcony off the living area
 - Single carspace in a security building

\$420,000 - \$435,000
Contact: Anthony Prestia
 02 9755 4222
 0414 775 577
 Joshua Prestia
 02 9755 4222
 0404 252 695
Type: Unit
Sold Date: 31/05/2019
<https://www.realequity.com.au>

27/8 Mead Drive,
Chipping Norton



SECURE GARAGE: 2.7 X 5.6



Disclaimer: Plans shown are for presentation purposes and are not part of any legal document. All measurements and figures are approximate. Floor Plans by FARRIS: 0455 905 945

Plans shown are only indicative of layout. Dimensions are approximate.

Chipping Norton, NSW
27/8 Mead Drive