



Hammondville, NSW
9/136-138 Heathcote Road

| | | | |
|-----------------|------------------|-----------------|------------------------------------|
| 2 BED | 1 BATH | 1 CAR | RealEquity estate agents |
|-----------------|------------------|-----------------|------------------------------------|

\$499,000 - \$548,000

This delightful single level 2 bedroom villa has recently had a makeover in a low maintenance complex and only moments away from Wattle Grove and Moorebank shops, public transport and very easy access to the M5.

- Open plan living & dining
- 2 bedrooms with built ins
- Private courtyard for entertaining
- Single lock up garage
- Total size approx 175m²

SOLD \$500,000

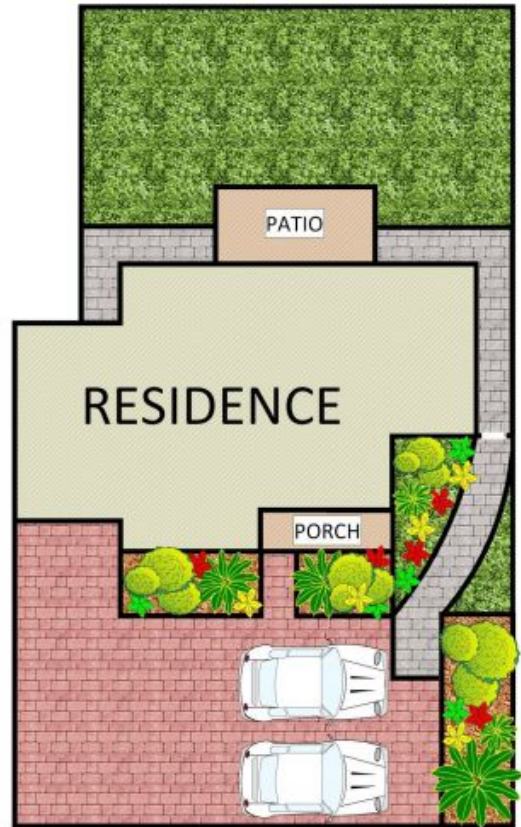
Contact: Hambi Lati
02 9755 4222
0402 469 556

Type: Villa
Sold Date: 20/04/2019

<https://www.realequity.com.au>



9/136-138 Heathcote Road,
Hammondville



Disclaimer: Plans shown are for presentation purposes and are not part of any legal document. All measurements and figures are approximate. Floor Plans by FARRIS: 0455 905 945

Plans shown are only indicative of layout. Dimensions are approximate.

Hammondville, NSW
9/136-138 Heathcote Road