



Wattle Grove, NSW

48 Beltana Court

3
BED

2
BATH

1
CAR

RealEquity
estate agents

Set for the growing family and presented immaculately, this impeccable home has been well cared for and offers so much potential. With plenty of living spaces to choose from, this single level north facing stunner is located in a quiet cul de sac and is the perfect opportunity to get into the beautiful suburb of Wattle Grove.

Features:

- Entrance leading to large separate lounge/dining
- Spacious open plan family and dining rooms
- Kitchen with gas cooking & stainless steel appliances
- Raked ceilings in kitchen and the family meal area

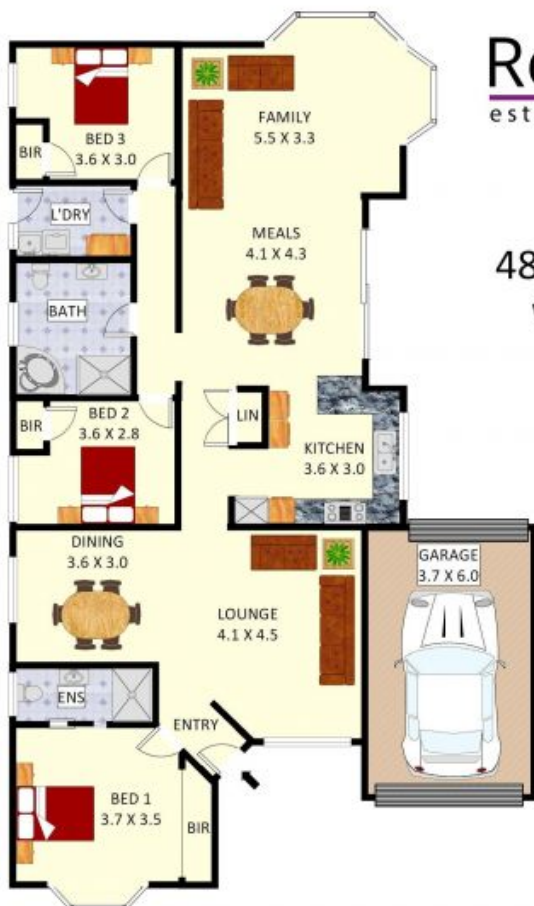
New Suburb Record for 2019!

Contact: Joshua Prestia
02 9755 4222
0404 252 695
Joshua Prestia
02 9755 4222
0404 252 695

Type: House

Sold Date: 08/10/2019

<https://www.realequity.com.au>



Real Equity
estate agents

48 Beltana Court,
Wattle Grove



Disclaimer: Plans shown are for presentation purposes and are not part of any legal document.

All measurements and figures are approximate.
Floor Plans by FARRIS: 0455 905 945



Plans shown are only indicative of layout. Dimensions are approximate.

Wattle Grove, NSW
48 Beltana Court