



Chipping Norton, NSW

11/211 Mead Place

2 BED
2 BATH
1 CAR

RealEquity
estate agents

A bright and sunny two bedroom apartment that offers a spacious and comfortable lifestyle in a well-kept complex, this excellent apartment is ideal for the buyer seeking an oversized residence with a modern floorplan and a relaxed inviting environment.

Features:

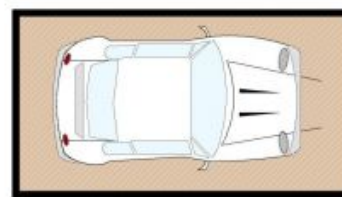
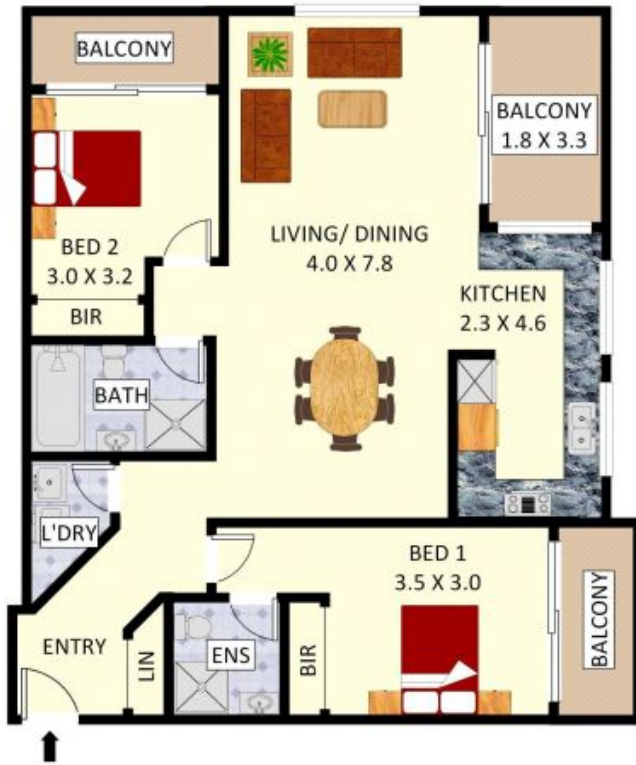
- Large foyer leading to open plan living/dining
- Modern kitchen with gas cooking
- Stainless steel appliances and plenty of bench space
- 2 generous bedrooms, built ins and balcony
- Master with good size ensuite, built in and own balcony

\$495,000 - \$515,000

Contact: Anthony Prestia
02 9755 4222
0414 775 577
Joshua Prestia
02 9755 4222
0404 252 695

Type: Unit
Sold Date: 29/04/2020
<https://www.realequity.com.au>

11/211 Mead Place,
Chipping Norton



1 x SECURE CAR SPACE



STORAGE

Disclaimer: Plans shown are for presentation purposes and are not part of any legal document. All measurements and figures are approximate. Floor Plans by FARRIS: 0455 905 945

Plans shown are only indicative of layout. Dimensions are approximate.

Chipping Norton, NSW
11/211 Mead Place