



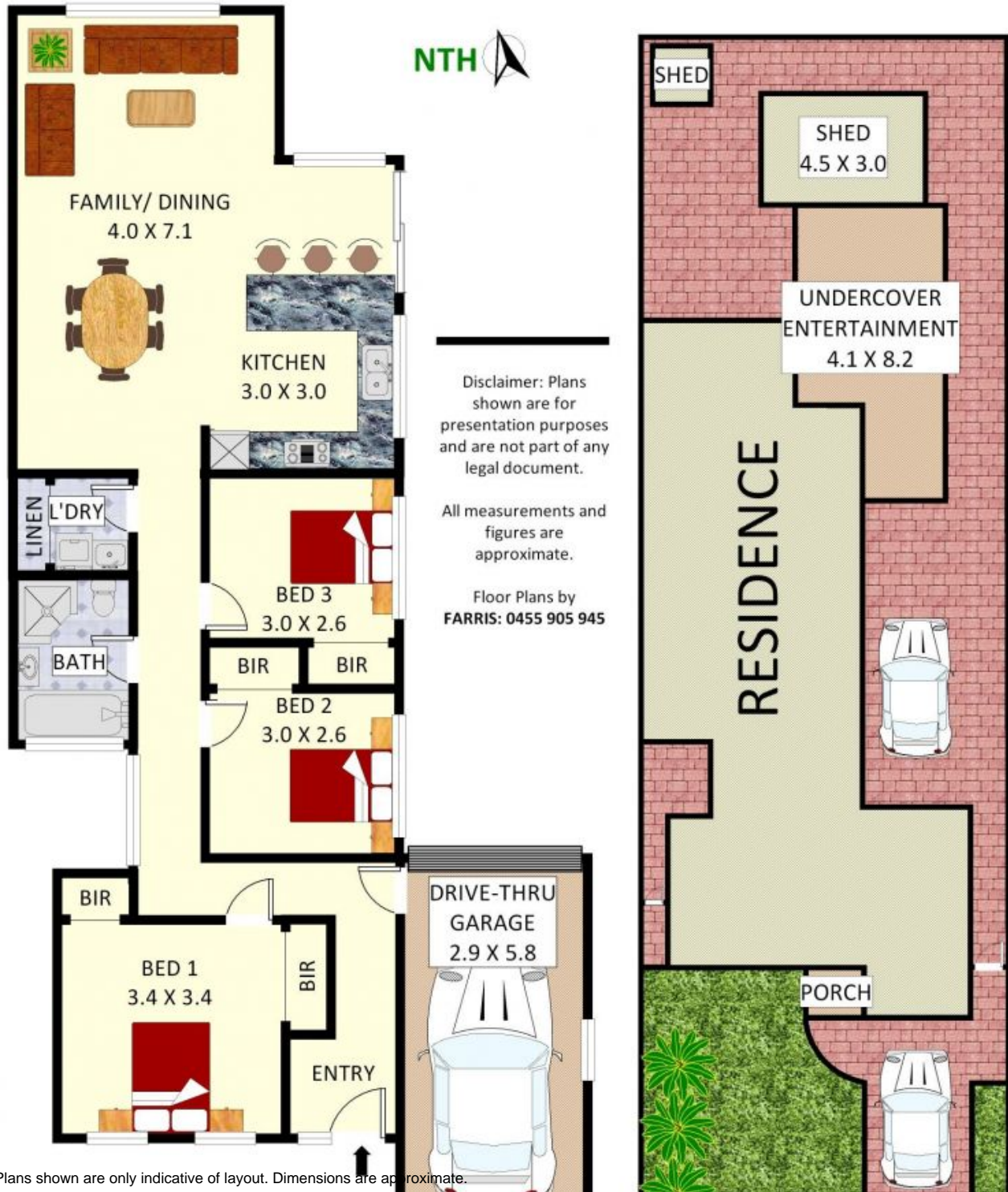
Wattle Grove, NSW
7 Woolmers Court

3 BED **1** BATH **1** CAR **RealEquity**
estate agents

Instantly captivating and presented with an abundance of character, this charming 3 bedroom home offers all the right features to call home. Recently renovated with an open plan design that offers loads of entertaining spaces and a lovely low maintenance backyard, this beautiful residence is perfect for those looking to make their start in the growing suburb of Wattle Grove.

- Features:
- Gorgeous facade with manicured gardens
 - Large open style family and dining area
 - Stunning kitchen with stone benchtops

SOLD - \$815,000!
Contact: Joshua Prestia
02 9755 4222
0404 252 695
Type: House
Sold Date: 01/01/2021
<https://www.realequity.com.au>



Plans shown are only indicative of layout. Dimensions are approximate.