



WATTLE GROVE, NSW
5 Blamey Road

4 BED **2** BATH **3** CAR

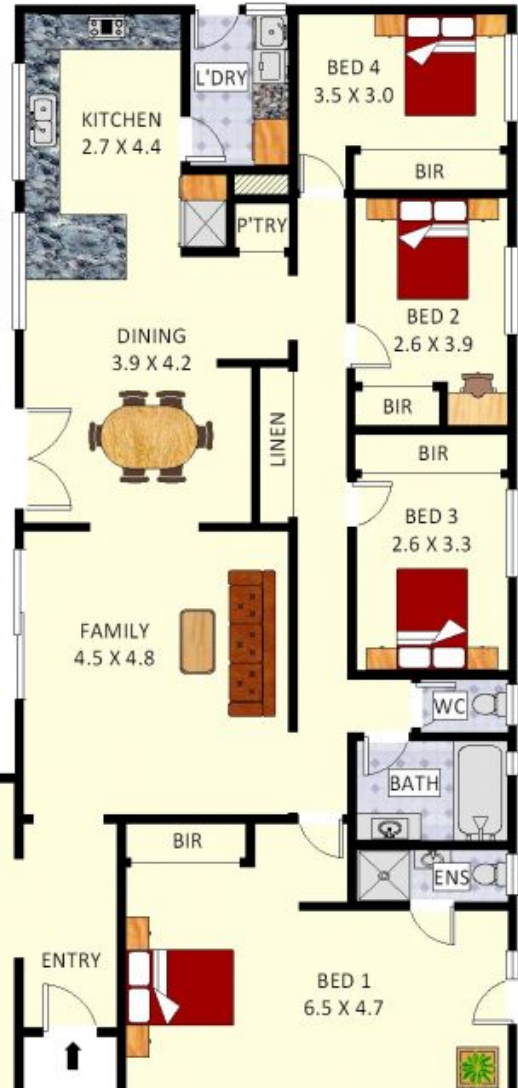
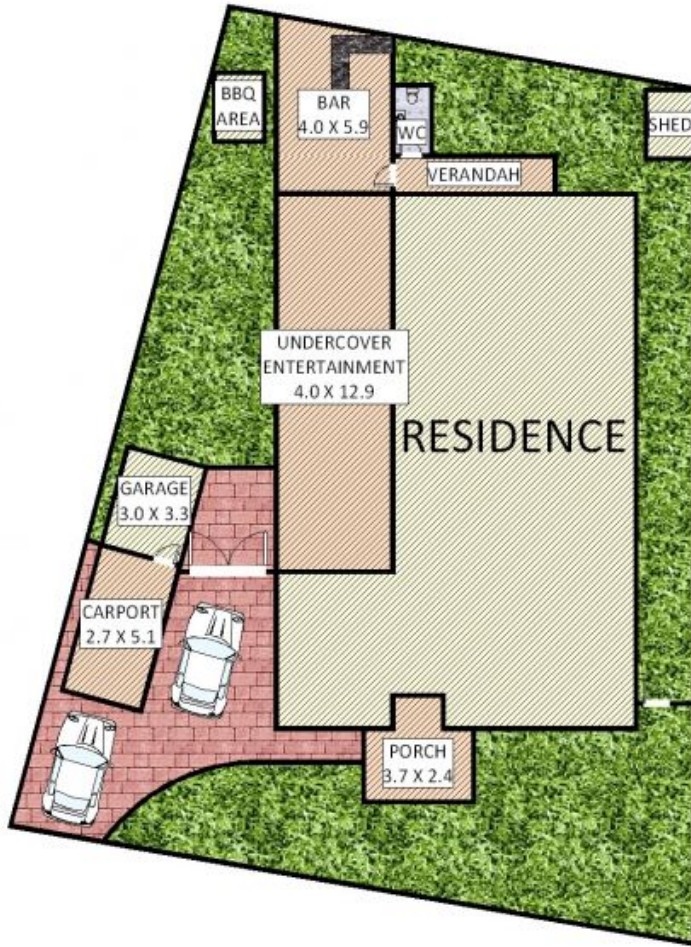


Immaculately presented and ready to move in, this gorgeous family home is perfectly suited to the growing family wanting a move into the popular suburb of Wattle Grove. Just a few minutes drive from the desirable Wattle Grove shopping centre as well as fantastic access to the M5 motorway, this four bedroom home with a terrific covered alfresco area including a bar, fireplace and more is perfect for entertaining guests or relaxing on your Sunday arvo.

- A Few Inviting Features:
- Light filled formal living area upon entrance
 - Beautifully flowing living & dining area

SOLD!
Contact: Antonio Furfaro
 02 9755 4222
 0455 077 861
 Joshua Prestia
 02 9755 4222
 0404 252 695
Type: House
Sold Date: 25/06/2021
<https://www.realequity.com.au>

5 Blamey Road, Wattle Grove



Disclaimer: Plans shown are for presentation purposes and are not part of any legal document. All measurements and figures are approximate.

Plans shown are only indicative of layout. Dimensions are approximate.

HK FLOOR PLANS: 0455 905 945

WATTLE GROVE, NSW
5 Blamey Road