



CHIPPING NORTON, NSW

21 Aylesbury Crescent

5
BED

3
BATH

4
CAR

RealEquity
estate agents

This fantastic residence offers an expansive floor plan with separate living areas, inviting entertaining spaces, a huge backyard perfect for the kids and enough space to accommodate the extended family. Situated in a peaceful, family friendly neighborhood, and only minutes to all local amenities including schools, public transport and parks, this home is perfectly suited to the growing family looking to upsize.

A Few Inviting Features:

- Captivating facade with sheltered porch on arrival
- Entertainment room / lounge area upon entry
- Combined open plan living and dining room

SOLD!

Contact:

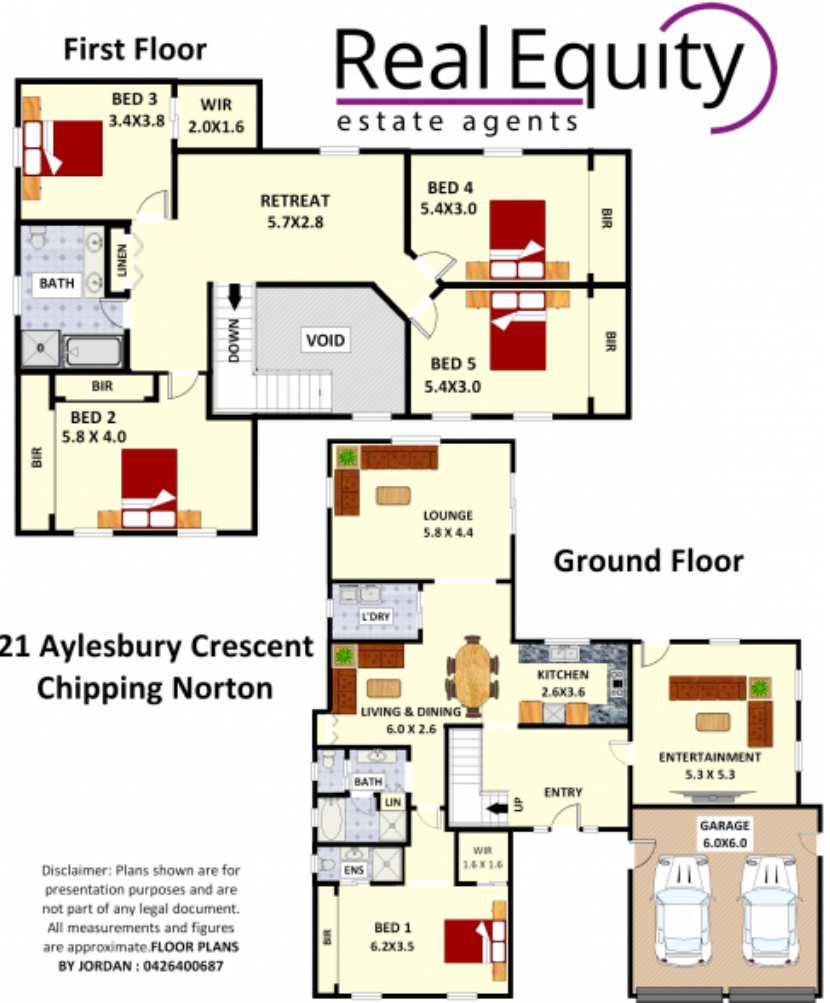
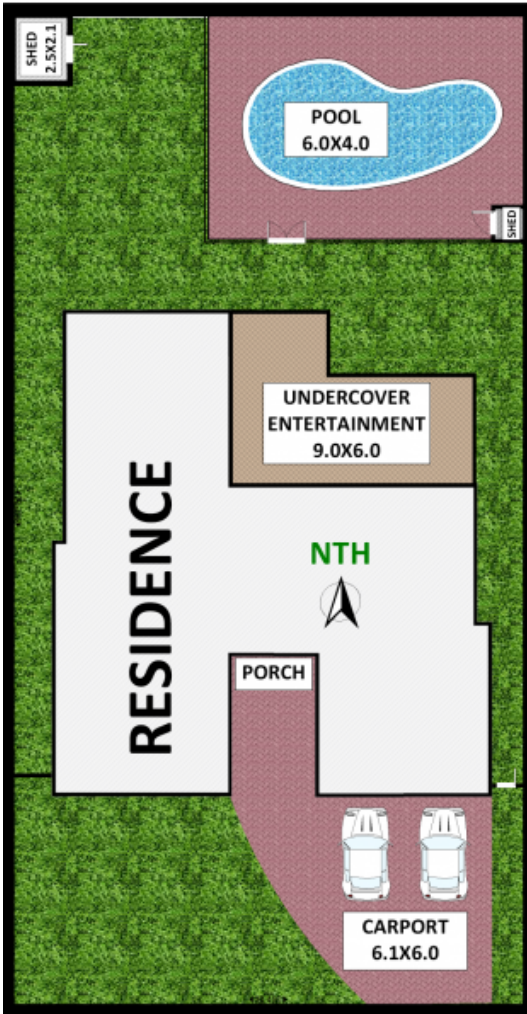
Joshua Prestia
02 9755 4222
0404 252 695
Anthony Prestia
02 9755 4222
0414 775 577

Type: House

Sold Date: 24/11/2021

Land: 673.4m²

<https://www.realequity.com.au>



Plans shown are only indicative of layout. Dimensions are approximate.

CHIPPING NORTON, NSW
21 Aylesbury Crescent