



CHIPPING NORTON, NSW

16/4 Mead Drive

2
BED

1
BATH

1
CAR

RealEquity
estate agents

This excellent ground floor apartment is situated in the ever popular lakeside estate and offers investors a fantastic opportunity to purchase a property with a secure long term tenant that maintains the apartment to a high standard.

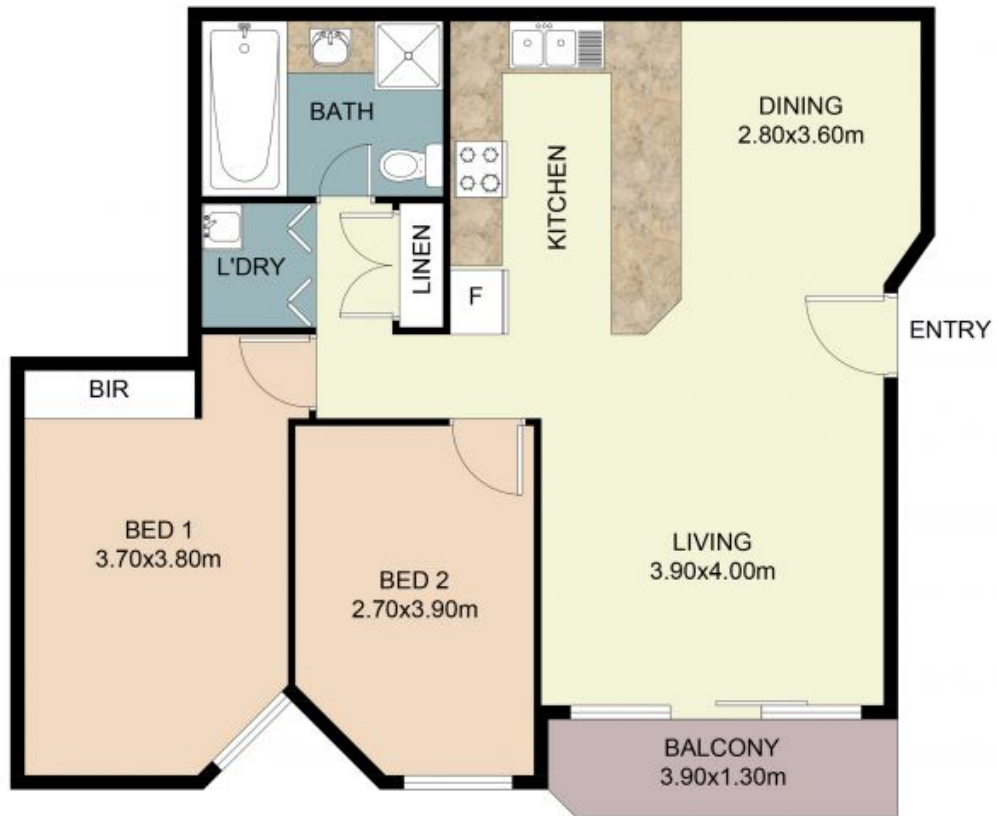
A Few Inviting Features:

- Open plan living combined with dining area
- Large kitchen with gas cooking and ample cupboard space
- 2 good size bedrooms, with built in robes
- Easy access entertainers balcony from lounge area
- Well kept bathroom with separate toilet

SOLD!

Contact: Anthony Prestia
0297554222
0414775577
Joshua Prestia
0297554222
0404252695

Type: Unit
Sold Date: 22/04/2022
<https://www.realequity.com.au>



FLOOR PLAN

Whilst every attempt has been made to ensure the accuracy of the floor plan contained here, measurements of doors, windows, rooms and any other items are approximate and no responsibility is taken for any error, omission, or misstatement. This plan is for illustrative purposes only and should be used in conjunction with any applicable legislation.

Plans shown are only indicative of layout. Dimensions are approximate.

CHIPPING NORTON, NSW
16/4 Mead Drive

REAL