



CHIPPING NORTON, NSW

16/4 Mead Drive

2
BED

1
BATH

1
CAR

RealEquity
estate agents

This excellent ground floor apartment is situated in the ever popular lakeside estate and offers investors a fantastic opportunity to purchase a property with a secure long term tenant that maintains the apartment to a high standard.

A Few Inviting Features:

- Open plan living combined with dining area
- Large kitchen with gas cooking and ample cupboard space
- 2 good size bedrooms, with built in robes
- Easy access entertainers balcony from lounge area
- Well kept bathroom with separate toilet

SOLD!

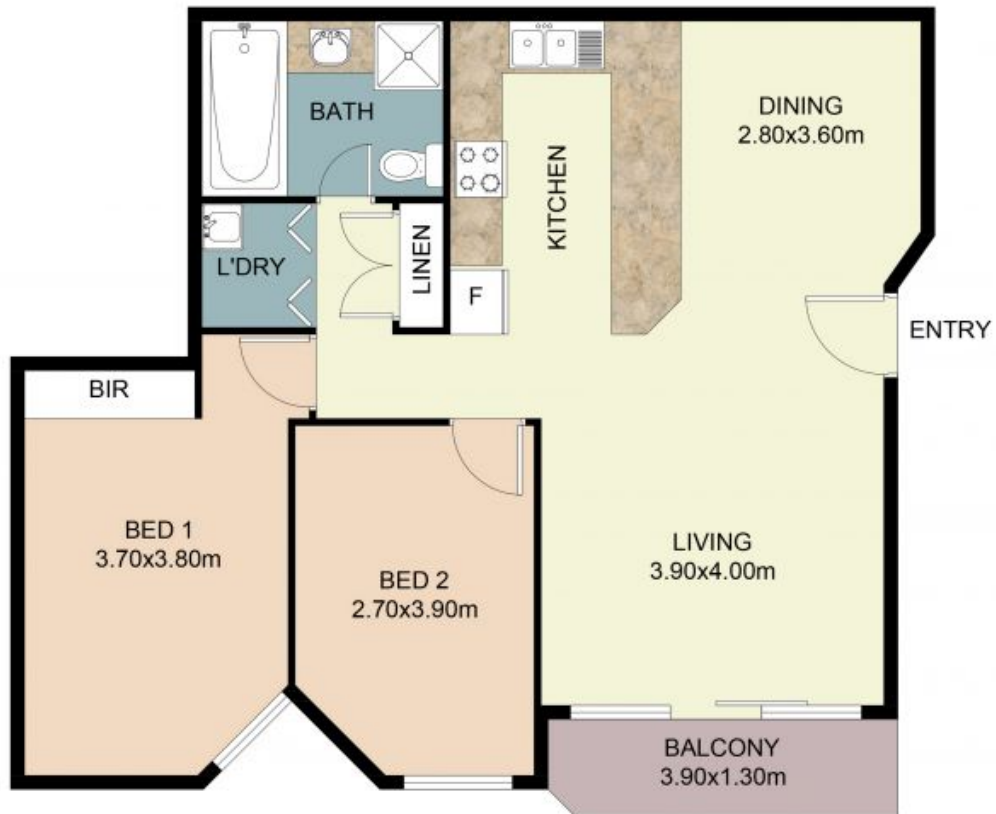
Contact:

Anthony Prestia
02 9755 4222
0414 775 577
Joshua Prestia
02 9755 4222
0404 252 695

Type: Unit

Sold Date: 22/04/2022

<https://www.realequity.com.au>



FLOOR PLAN

Whilst every attempt has been made to ensure the accuracy of the floor plan contained here, measurements of doors, windows, rooms and any other items are approximate and no responsibility is taken for any error, omission, or misstatement. This plan is for illustrative purposes only and should be used as such by any prospective purchaser.

Plans shown are only indicative of layout. Dimensions are approximate.

CHIPPING NORTON, NSW
16/4 Mead Drive

REAL