



WATTLE GROVE, NSW

4 Wimbledon Court

3
BED

1
BATH

1
CAR

RealEquity
estate agents

Superbly presented and tucked away in a peaceful Wattle Grove cul-dec-sac is the cozy 3 bedroom original home, offering a low maintenance ready to move in lifestyle. Perfectly suited to families looking for a move into a friendly neighborhood or keen investors looking to capitalise on excellent rental returns, this home is bound to be a hit.

A Few Inviting Features:

- Spacious living/dining room at rear of home
- Well kept kitchen with electric cooking
- 3 good sized bedrooms with built ins
- Master with access to 3 way bathroom

SOLD!

Contact:

Antonio Furfaro
02 9755 4222
0455 077 861
Joshua Prestia
02 9755 4222
0404 252 695

Type:

House

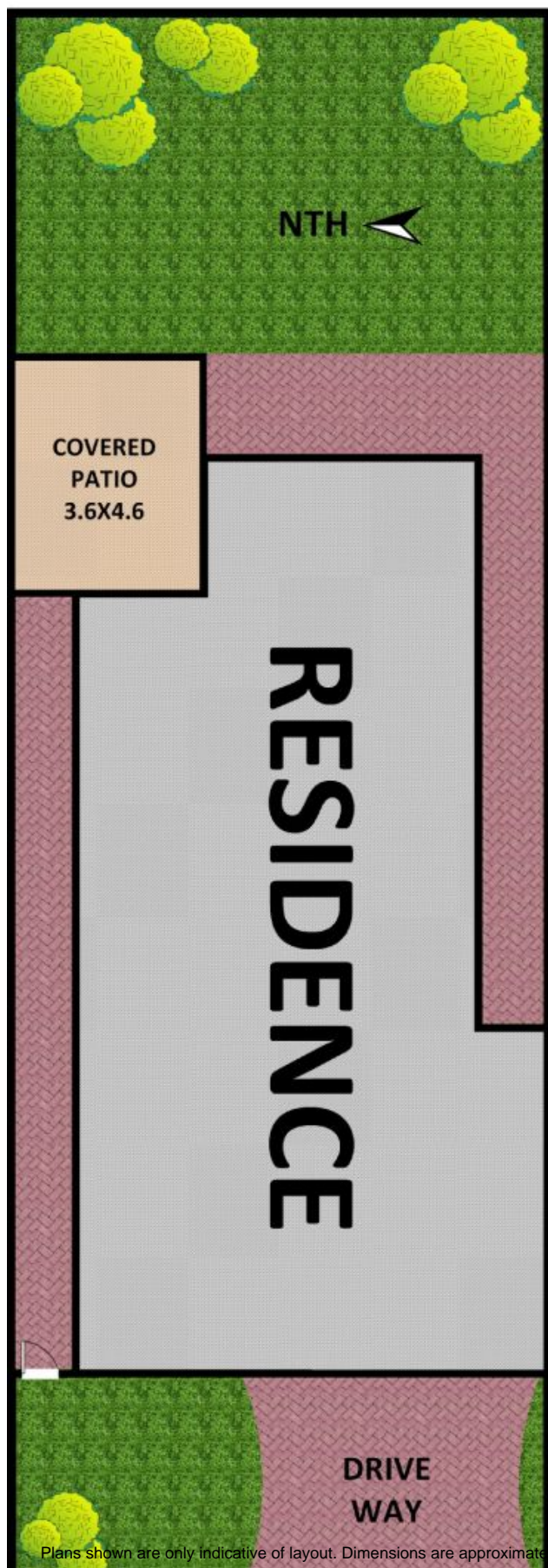
Sold Date:

06/07/2022

Land:

311.3m2

<https://www.realequity.com.au>

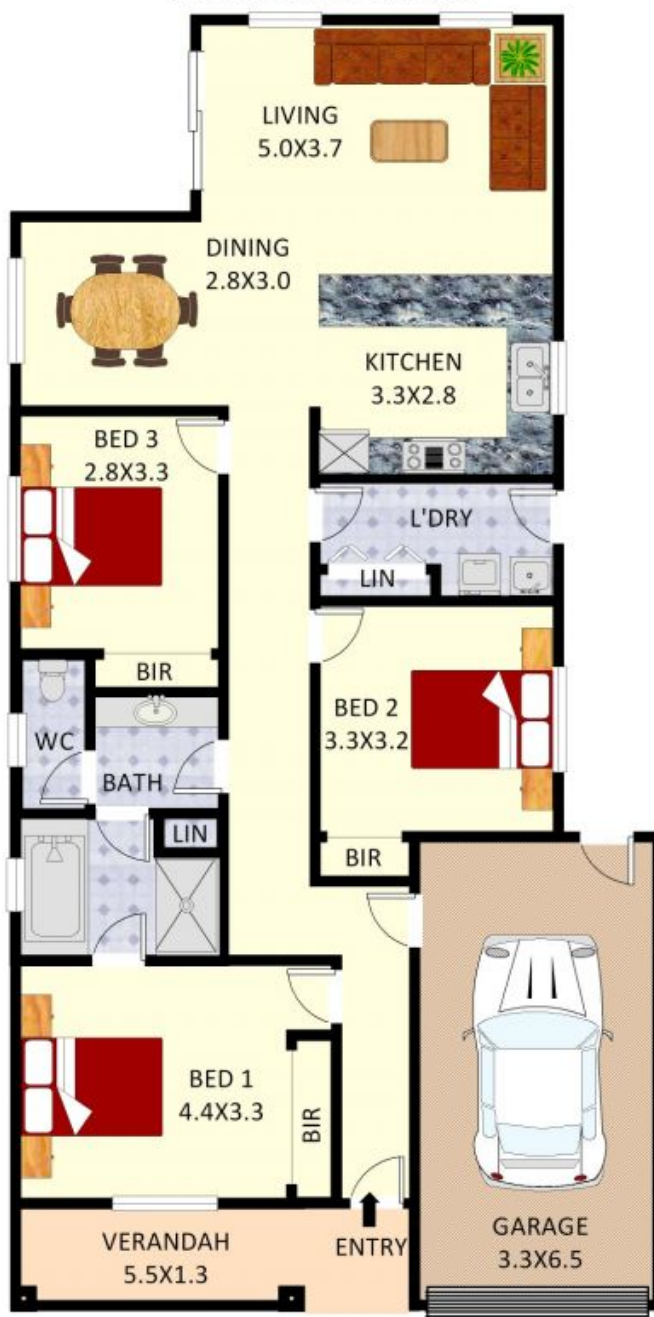


Plans shown are only indicative of layout. Dimensions are approximate.

**REAL
EQUITY**
estate agents

Disclaimer: Plans shown are for presentation purposes and are not part of any legal document. All measurements and figures are approximate.

JORDAN FLOOR PLANS: 0426400687



**4 Wimbledon Court,
Wattle Grove**

WATTLE GROVE, NSW
4 Wimbledon Court