



## WATTLE GROVE, NSW

4 Wimbledon Court

**3** BED  
**1** BATH  
**1** CAR

**RealEquity**  
estate agents

Superbly presented and tucked away in a peaceful Wattle Grove cul-dec-sac is the cozy 3 bedroom original home, offering a low maintenance ready to move in lifestyle. Perfectly suited to families looking for a move into a friendly neighborhood or keen investors looking to capitalise on excellent rental returns, this home is bound to be a hit.

### A Few Inviting Features:

- Spacious living/dining room at rear of home
- Well kept kitchen with electric cooking
- 3 good sized bedrooms with built ins
- Master with access to 3 way bathroom

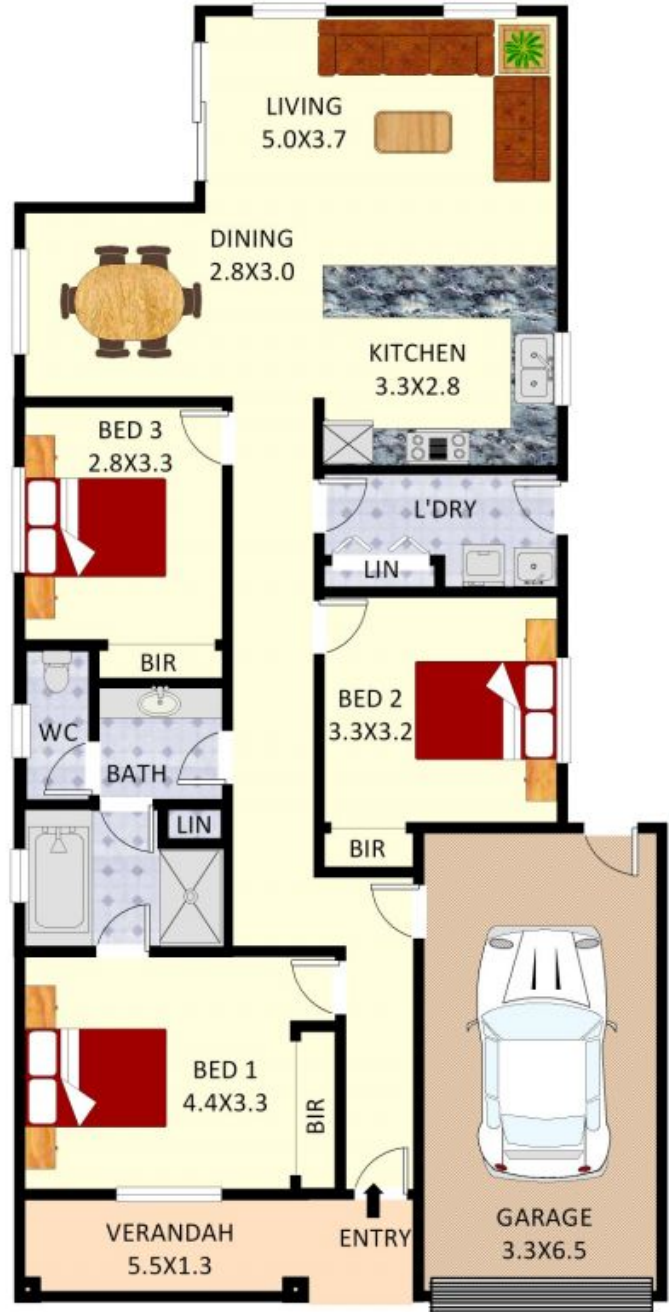
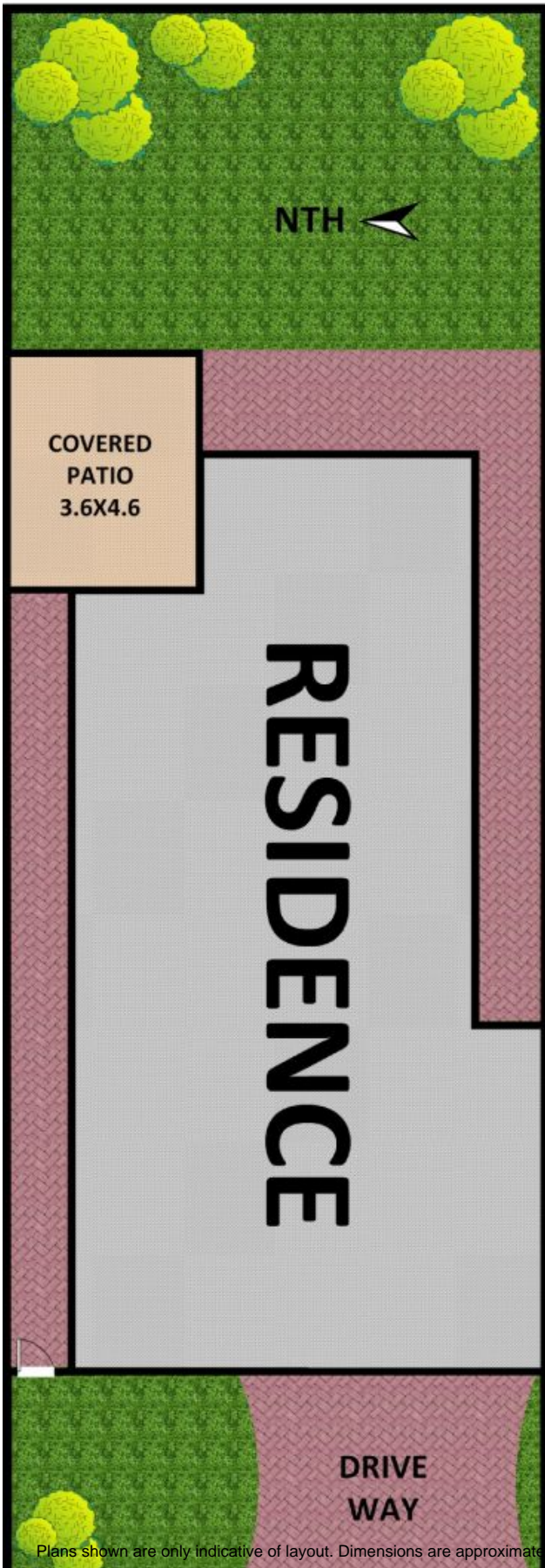
### SOLD!

**Contact:** Antonio Furfaro  
02 9755 4222  
0455 077 861  
Joshua Prestia  
02 9755 4222  
0404 252 695

**Type:** House  
**Sold Date:** 06/07/2022  
**Land:** 311.3m2  
<https://www.realequity.com.au>

Disclaimer: Plans shown are for presentation purposes and are not part of any legal document. All measurements and figures are approximate.

JORDAN FLOOR PLANS: 0426400687



**4 Wimbledon Court,  
Wattle Grove**

Plans shown are only indicative of layout. Dimensions are approximate.

**WATTLE GROVE, NSW**  
4 Wimbledon Court