



**WATTLE GROVE, NSW**  
14 Oldbury Court

**3** BED  
**2** BATH  
**1** CAR



Situated in a quiet and friendly Wattle Grove court is this lovely, low maintenance single level residence. Offering well presented interiors, a nicely flowing floor plan and potential to add your personal touch in future if desired, this home will please a large calibre of buyers including families, couples and investors.

**A Few Inviting Features:**

- Beautifully manicured gardens & lawns
- Spacious open style lounge/dining upon entry
- Additional living/family room at rear of home
- Well kept kitchen with gas top cooking

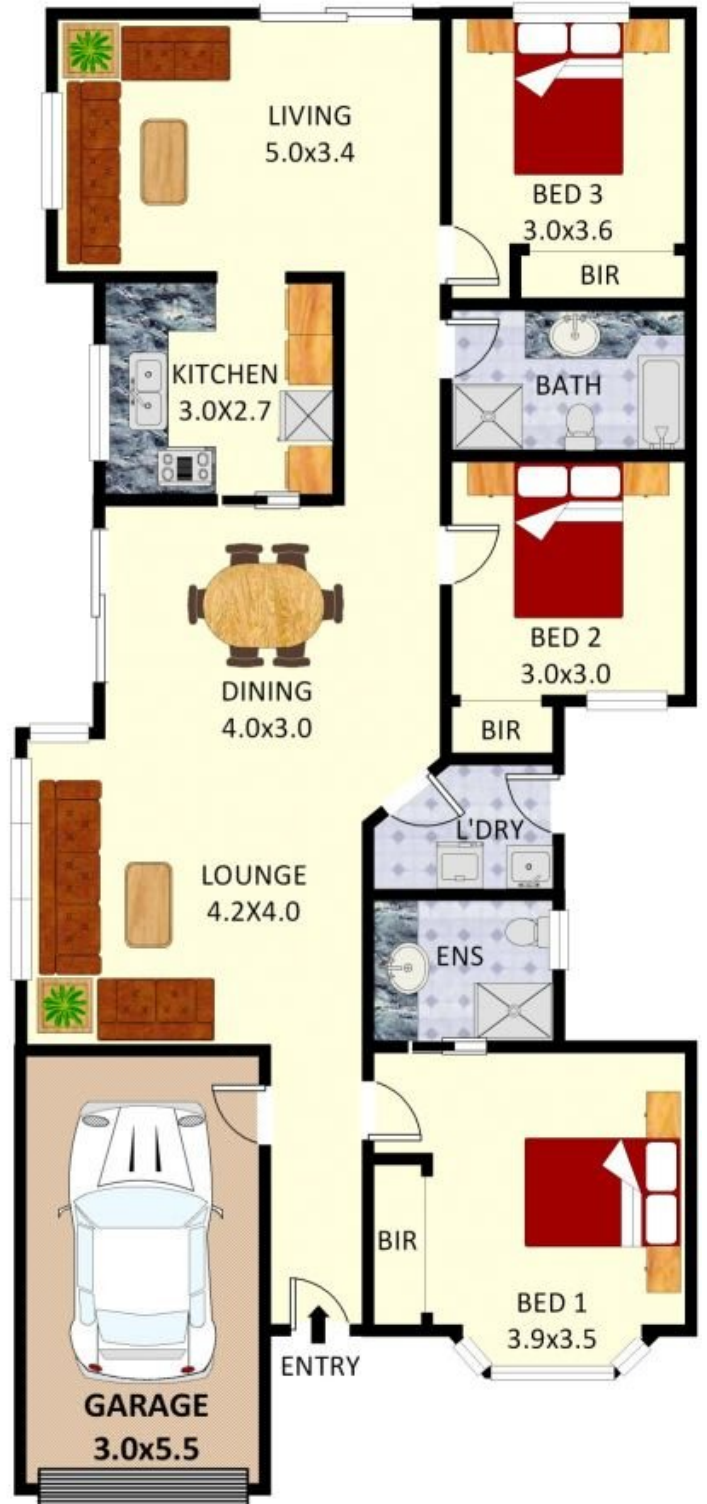
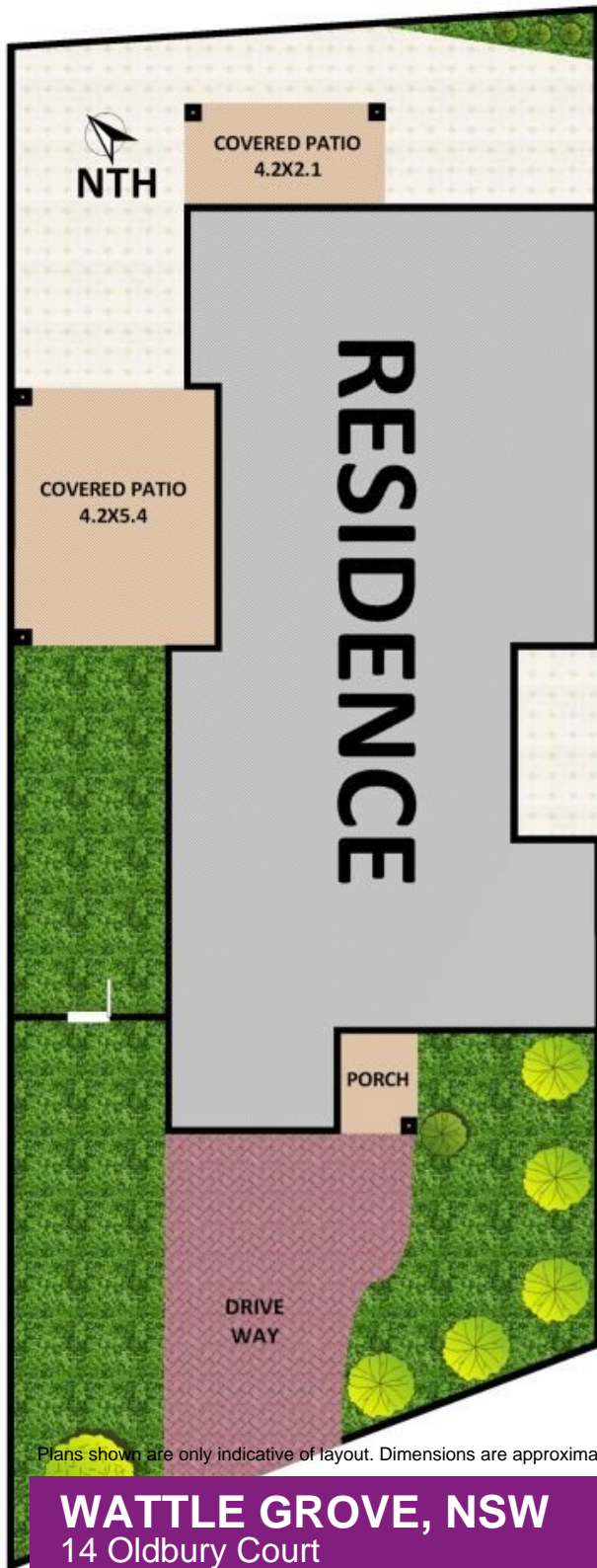
**SOLD!**

**Contact:** Joshua Prestia  
02 9755 4222  
0404 252 695  
Joshua Prestia  
02 9755 4222  
0404 252 695

**Type:** House  
**Sold Date:** 20/07/2022  
**Land:** 357m2  
<https://www.realequity.com.au>

Disclaimer: Plans shown are for presentation purposes and are not part of any legal document. All measurements and figures are approximate.

JORDAN FLOOR PLANS: 0426400687



Plans shown are only indicative of layout. Dimensions are approximate.

**WATTLE GROVE, NSW**  
14 Oldbury Court