



WATTLE GROVE, NSW

2 Kew Gardens Court

4
BED

2
BATH

2
CAR

RealEquity
estate agents

This single level brick home presents an exceptionally rare opportunity to purchase a R3 zoned 602sqm corner block in the heart of Wattle Grove. Additionally, this residence has the added benefit of plans to develop three freestanding 4 bedroom, 3 bathroom houses making it a highly appealing proposition for developers.

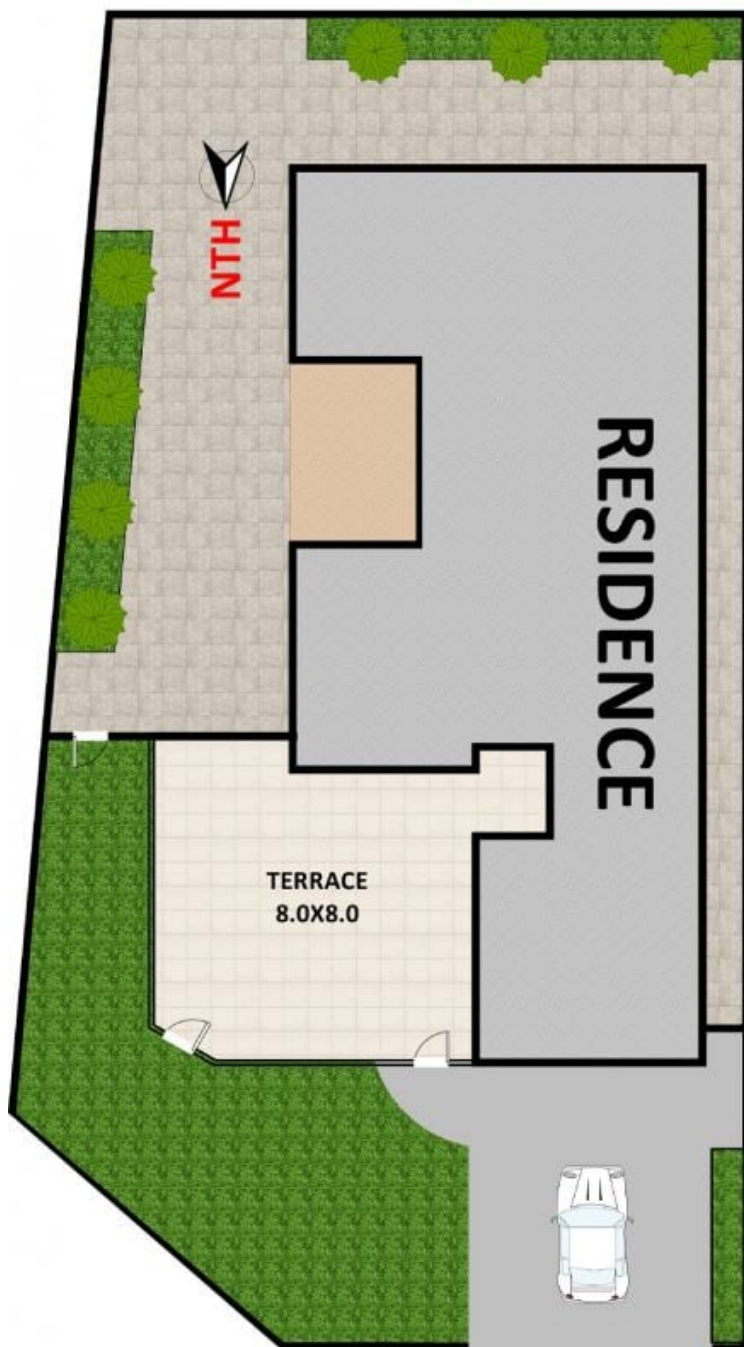
A Few Inviting Features:

- Large terrace leading to front door
- Spacious formal lounge upon entry
- Well kept kitchen with plenty of bench space

SOLD! \$1,370,000

Contact: Ammar El Ayoubi
02 9755 4222
0455 245 802
Joshua Prestia
02 9755 4222
0404 252 695

Type: House
Sold Date: 16/07/2022
Land: 602m2
<https://www.realequity.com.au>



2 Kew Gardens Court, Wattle Grove

Plans shown are only indicative of layout. Dimensions are approximate.

Disclaimer: Plans shown are for presentation purposes and are not part of any legal document. All measurements and figures are approximate.

JORDAN FLOOR PLANS: 0426400687

WATTLE GROVE, NSW
2 Kew Gardens Court