



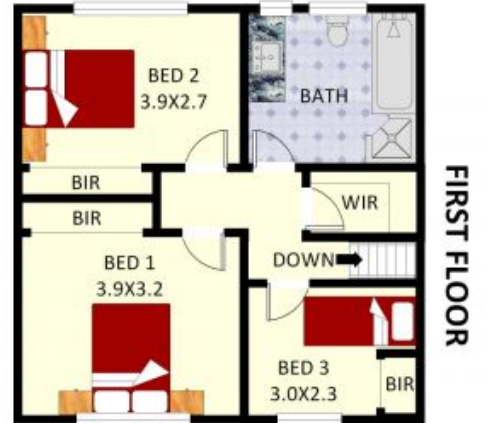
**Chipping Norton, NSW**  
1 Lewin Crescent

**4** BED **1** BATH **4** CAR **RealEquity**  
estate agents

Centrally located to schools, shops, transport, and a medical center, this lovely family residence has been occupied by the same owners, offering a captivating facade and is defined by its unique character and huge potential for future growth. Set to impress with its expansive living on approximately 663.9sqm and a sparkling in-ground 9.2M x 4.6M approx. swimming pool creating the ultimate entertainer's delight.

- A few Inviting Features Include:
- Expansive front yard & well-manicured gardens
  - Formal dining upon entry leading to separate dining
  - Full timber kitchen with ample storage space

**SOLD**  
**Contact:** Anthony Prestia  
02 9755 4222  
0414 775 577  
**Type:** House  
**Sold Date:** 20/02/2023  
**Land:** 663.9m2  
<https://www.realequity.com.au>



**1 Lewin Crescent, Chipping Norton**

Plans shown are only indicative of layout. Dimensions are approximate.