



Chipping Norton, NSW
14 Epsom Road

4 BED
3 BATH
2 CAR



A beautifully presented home, ideal for a large family looking for the extra space with a spacious interior and a grand wrap-around verandah creating a great corner facade, offering multiple interior living spaces and an excellent huge open corner position backyard

Features Include:

- Beautiful well-manicured gardens
- Spacious lounge room upon entry
- Formal dining with extra external access
- Massive kitchen with wrap-around breakfast bench
- Ample storage cupboards plus electric cooking

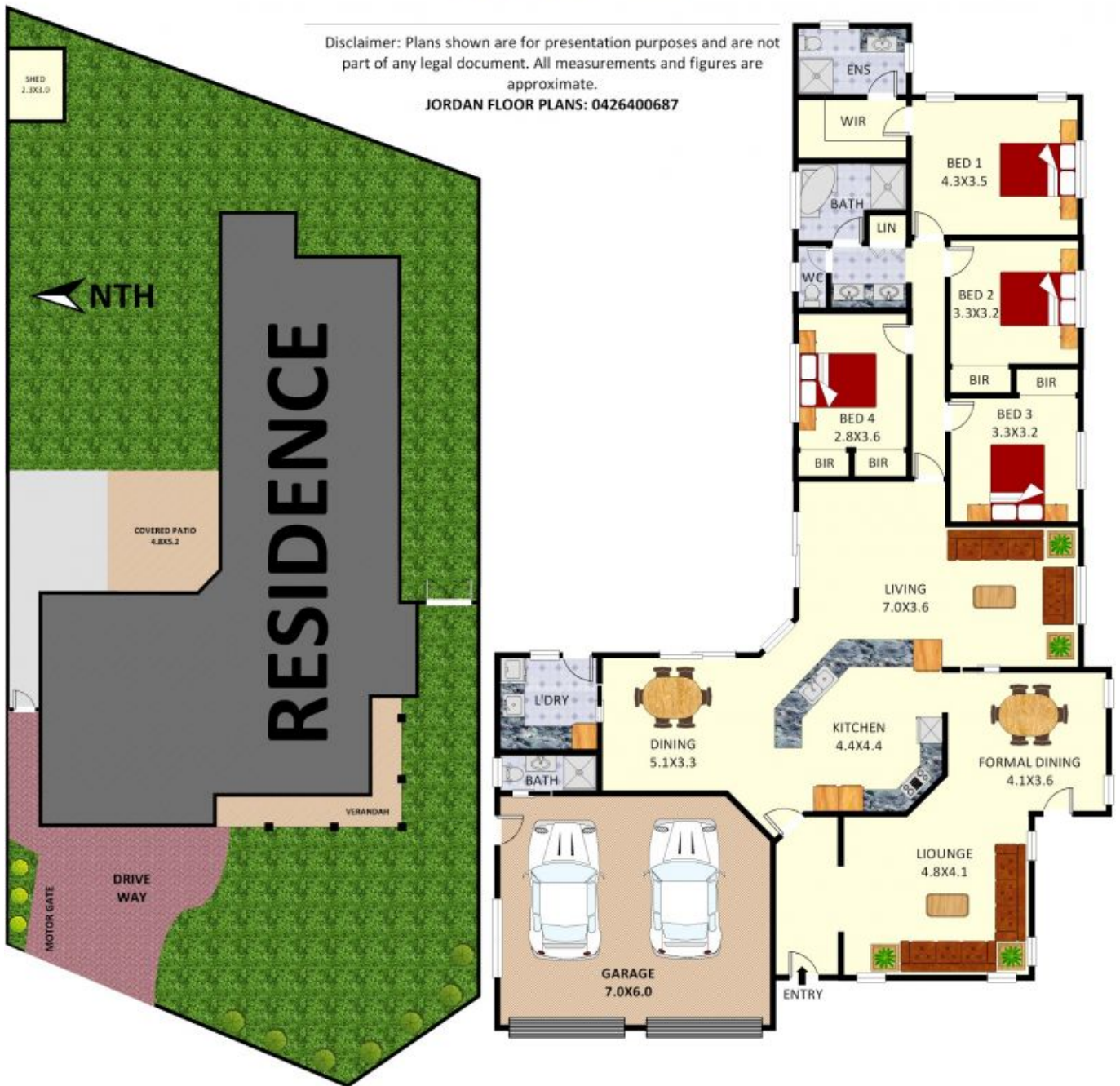
SOLD

Contact: Anthony Prestia
02 9755 4222
0414 775 577
Joshua Prestia
02 9755 4222
0404 252 695

Type: House
Sold Date: 06/10/2022
Land: 769.1m2
<https://www.realequity.com.au>

Disclaimer: Plans shown are for presentation purposes and are not part of any legal document. All measurements and figures are approximate.

JORDAN FLOOR PLANS: 0426400687



14 Epsom Road , chipping norton

Plans shown are only indicative of layout. Dimensions are approximate.

Chipping Norton, NSW
14 Epsom Road