



**REAL
EQUITY**
estate agents



**REAL
EQUITY**



Wattle Grove, NSW

2A Labuan Road

4
BED

2
BATH

2
CAR

RealEquity
estate agents

This gorgeous home has been transformed into a captivating residence showcasing stylish and contemporary finishes with an open-plan design that attracts loads of natural light and is complimented with natural timber and travertine accents.

A Few Inviting Features:

- Welcoming facade with wrap-around porch
- Spacious open-plan living filled with natural light
- Dining room extending to the outdoor alfresco area
- Contemporary kitchen with breakfast bar & skylights
- Stone benches & stunning black finishes/cabinetry

SOLD

Council Rates: \$442/qtr (approx)

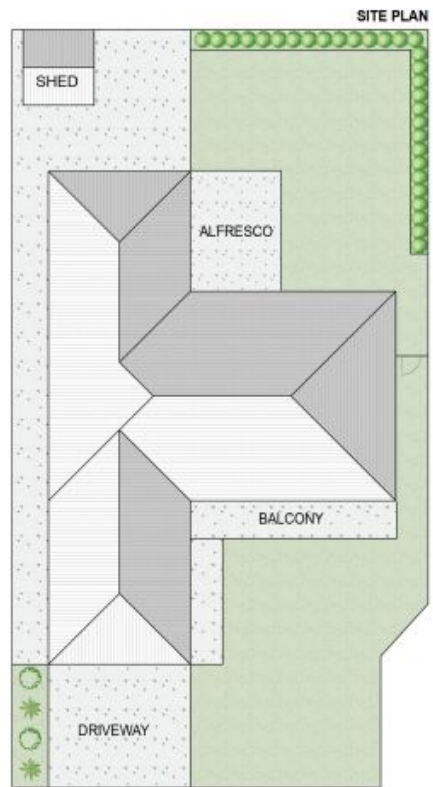
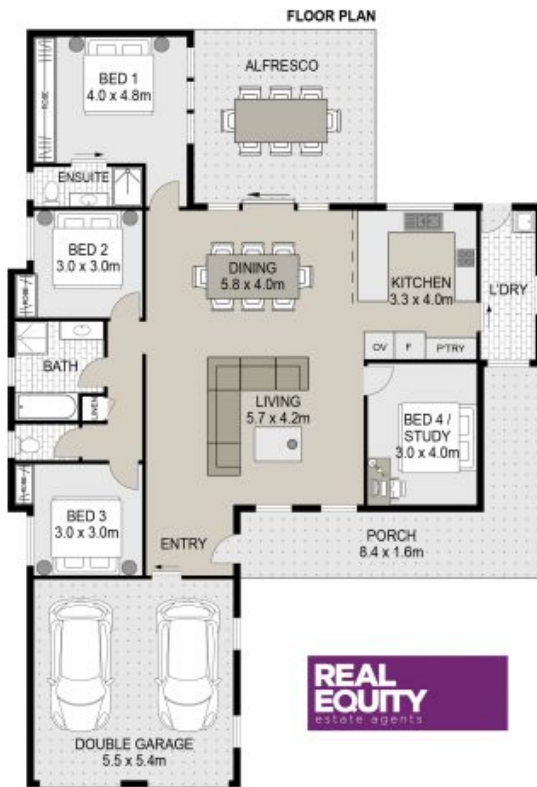
Contact: Joshua Prestia
02 9755 4222
0404 252 695
Antonio Furfaro
02 9755 4222
0455 077 861

Type: House

Sold Date: 19/11/2022

Land: 495.3m2

<https://www.realequity.com.au>



2A Labuan Road, Wattle Grove

Scale in metres. Indicative only. Dimensions are approximate. All information contained herein is gathered from sources we believe to be reliable. However we cannot guarantee its accuracy and interested persons should rely on their own enquiries.



Plans shown are only indicative of layout. Dimensions are approximate.

Wattle Grove, NSW
2A Labuan Road