

Liverpool, NSW
1507/420 Macquarie Street

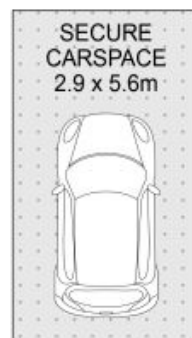
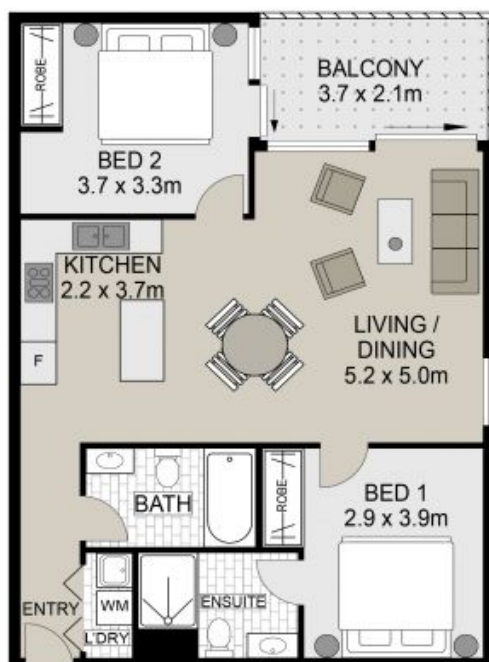
2 BED **2** BATH **1** CAR



Situated in the growing suburb of Liverpool, Skyhaus presents this beautiful two-bedroom unit that provides low-maintenance living and is presented with modern inclusions. Offering an open living area and picturesque city views to enjoy on the balcony, this stunning home is perfect for the first home buyer or investor looking to add to their property portfolio.

- A Few Inviting Features:
- Gorgeous entrance into Skyhaus Apartments
 - Exit elevator on level 15, easy access to home

SOLD
Council Rates: \$296/qtr (approx)
Water Rates: \$1,000/qtr (approx)
Contact: Hambi Lati
 02 9755 4222
 0402 469 556
 Joshua Prestia
 02 9755 4222
 0404 252 695
Type: Unit
Sold Date: 31/03/2023
<https://www.realequity.com.au>



(NOT IN POSITION)

1507/420 Macquarie Street, Liverpool

Internal Area (Approx.): 77.5m²
External Area (Approx.): 24.0m²

Scale in metres. Indicative only. Dimensions are approximate. All information contained herein is gathered from sources we believe to be reliable. However we cannot guarantee its accuracy and interested persons should rely on their own enquiries.



Plans shown are only indicative of layout. Dimensions are approximate.

Liverpool, NSW
1507/420 Macquarie Street