



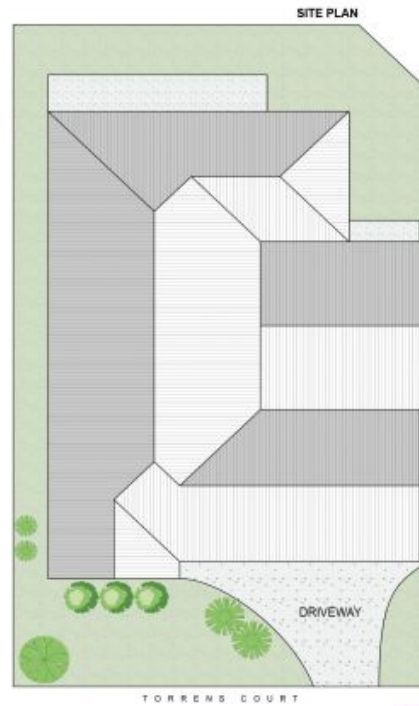
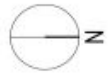
**Wattle Grove, NSW**  
6 Torrens Court

**4** BED **2** BATH **2** CAR **RealEquity**  
estate agents

This beautiful family home has been tastefully renovated to the highest standards, making it a stylish and modern oasis that is perfect for comfortable living. Offering a spacious free-flowing floorplan and an ideal eastern aspect that fills the space with natural light; With a seamless blend from indoor to outdoor, this truly is a fantastic opportunity to secure a contemporary property that is perfect for a family looking to live a comfortable yet luxurious life.

- A Few Inviting Features:
- Captivating street presence
  - Living upon entry enjoying the morning sun

**\$1,300,000**  
**Contact:** Joshua Prestia  
02 9755 4222  
0404 252 695  
**Type:** House  
**Sold Date:** 21/04/2023  
**Land:** 484.4m2  
<https://www.realequity.com.au>



## 6 Torrens Court, Wattle Grove



Scale in metres. Indicative only. Dimensions are approximate. All information contained herein is gathered from sources we believe to be reliable. However we cannot guarantee its accuracy and interested persons should rely on their own enquiries.



Plans shown are only indicative of layout. Dimensions are approximate.

**Wattle Grove, NSW**  
6 Torrens Court