



## Chipping Norton, NSW

2/1 Balanada Avenue

3  
BED

3  
BATH

2  
CAR

RealEquity  
estate agents

Presenting a range of brand-new townhouses, defined by their tasteful blend of contemporary architectural design and appealing open-plan living. Every townhouse with its own quality inclusions, characterised by a combination of stylish neutral colour schemes, matte black finishes and feature custom joinery throughout. Ready to move in, it is ideally suited for someone looking to live a low-maintenance yet elegant lifestyle, or a first home buyer looking to break into the market. Additionally, a superb opportunity for an investor looking to add to their growing portfolio.

A Few Inviting Features:

- Captivating facade with Blackstone brick construct

**\$838,000**

**Contact:**

Joshua Prestia

02 9755 4222

0404 252 695

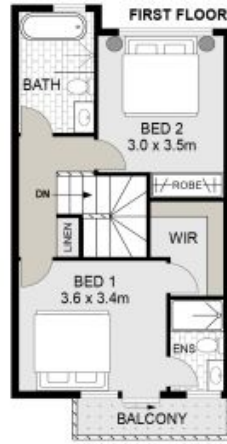
**Type:**

Townhouse

**Sold Date:**

14/07/2023

<https://www.realequity.com.au>



## 2/1 BALANADA AVENUE, CHIPPING NORTON

Scale in metres. Indicative only. Dimensions are approximate. All information contained herein is gathered from sources we believe to be reliable. However we cannot guarantee its accuracy and interested persons should rely on their own enquiries.



Plans shown are only indicative of layout. Dimensions are approximate.

**Chipping Norton, NSW**  
2/1 Balanada Avenue