



Wattle Grove, NSW

11/11-13 Armata Court

3 BED
1 BATH
1 CAR

RealEquity
estate agents

Presenting this delightful sun-filled townhouse, boasting a superb entertainers yard, bright & airy interiors and an impressive location. Conveniently situated just across the road from Wattle Grove Shopping Village, you'll have all your essentials at your doorstep. Tucked away in a tranquil complex, this home is an ideal choice for a first-time buyer or investor looking to add to their growing portfolio.

A Few Inviting Features:

- Dining upon entry, extending to kitchen
- Spacious lounge room leading to alfresco
- Kitchen with gas cooking & ample storage

\$810,000

Council Rates: \$340/qtr (approx)

Water Rates: \$620/qtr (approx)

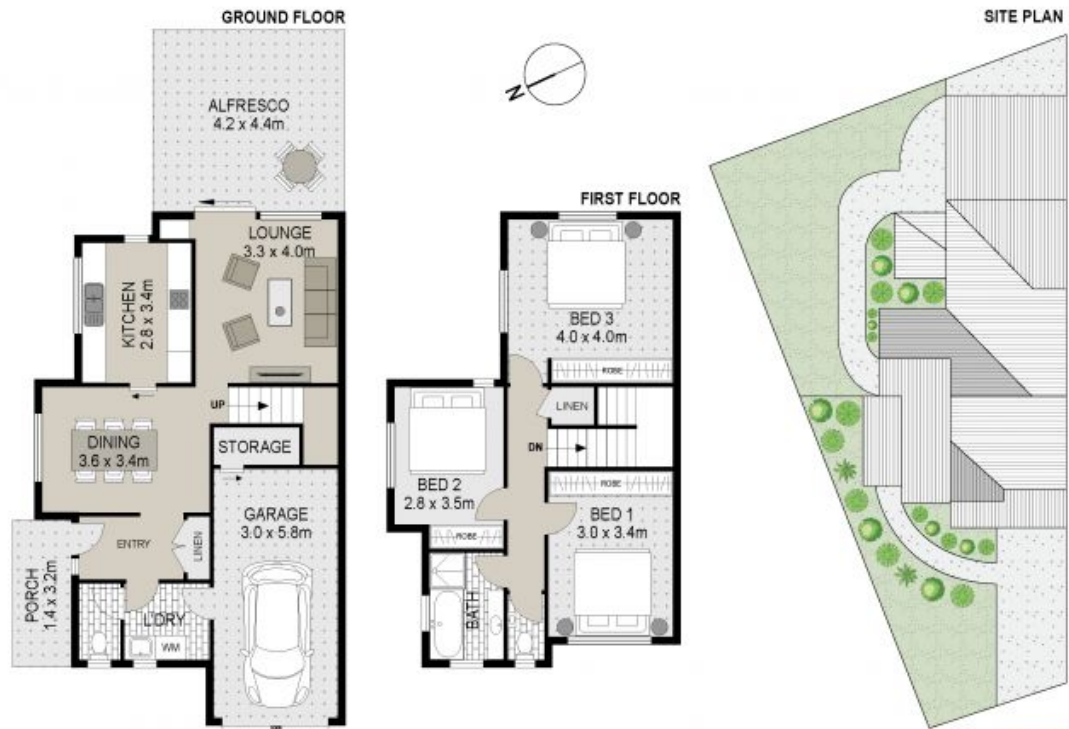
Contact: Hambi Lati
02 9755 4222
0402 469 556
Anton Livaja
02 9755 4222
0456 418 619

Type: Townhouse

Sold Date: 25/09/2023

Land: 226m²

<https://www.realequity.com.au>



11/11-13 Armata Court, Wattle Grove



Scale in metres, indicative only. Dimensions are approximate. All information contained herein is gathered from sources we believe to be reliable. However we cannot guarantee its accuracy and interested persons should rely on their own enquiries



Plans shown are only indicative of layout. Dimensions are approximate.

Wattle Grove, NSW
11/11-13 Armata Court