



## Chipping Norton, NSW

40/3 Mead Drive

**2**  
BED

**1**  
BATH

**1**  
CAR

**RealEquity**  
estate agents

Embrace the serenity of resort-style living in this elevated ground-floor apartment, uniquely positioned on the corner overlooking the swimming pool and parklands. With a beautiful outlook, it receives plenty of sunshine and has the perfect place to relax on the balcony. This apartment is well suited to first-home buyers, investors and downsizers.

### A Few Inviting Features:

- Light-filled corner apartment overlooking pool
- Spacious combined living & dining spaces
- Private balcony extending from living room
- Lovely open-style kitchen with gas cooking

**\$535,000**

**Council Rates:** \$332/qtr (approx)

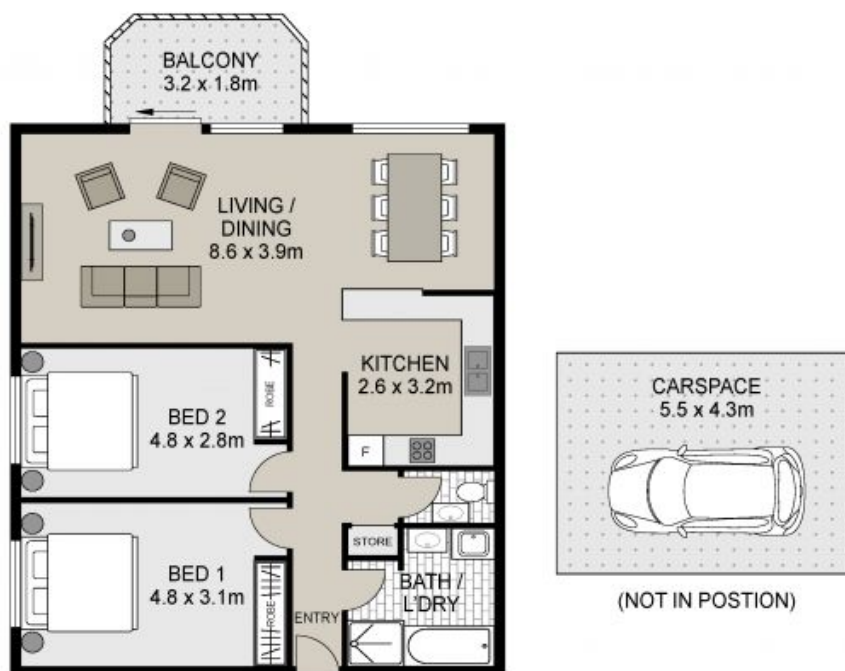
**Water Rates:** \$713/qtr (approx)

**Contact:** Joshua Prestia  
02 9755 4222  
0404 252 695  
Ammar El Ayoubi  
02 9755 4222  
0455 245 802

**Type:** Apartment

**Sold Date:** 28/09/2023

<https://www.realequity.com.au>



## 40/3 Mead Drive, Chipping Norton

Scale in metres. Indicative only. Dimensions are approximate. All information contained herein is gathered from sources we believe to be reliable. However we cannot guarantee its accuracy and interested persons should rely on their own enquiries



**REAL  
EQUITY**  
ESTATE AGENTS

Plans shown are only indicative of layout. Dimensions are approximate.

**Chipping Norton, NSW**  
40/3 Mead Drive