



Wattle Grove, NSW

8/11-13 Armata Court

3 BED
1 BATH
1 CAR

RealEquity
estate agents

\$820,000

Contact:

Hambi Lati

02 9755 4222

0402 469 556

Type:

Townhouse

Sold Date:

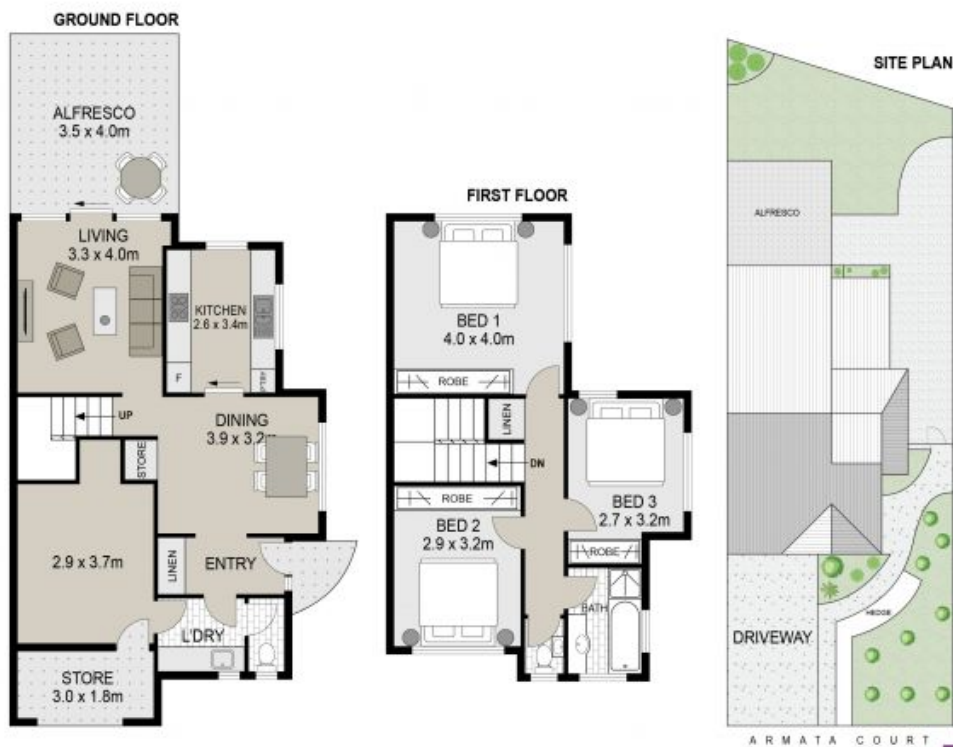
07/11/2023

<https://www.realequity.com.au>

Presenting this lovely townhouse, boasting modern & renovated touches throughout, bright & airy interiors and a superb entertainers alfresco, this home is sure to impress! Conveniently situated just across the road from Wattle Grove Shopping Village, you'll have all your essentials at your doorstep. Tucked away in a tranquil complex, this home is an ideal choice for a first-time buyer, downsizer or investor looking to add to their growing portfolio.

A Few Inviting Features:

- Dining upon entry, extending to kitchen



8/11-13 Armata Court, Wattle Grove



Scale in metres. Indicative only. Dimensions are approximate. All information contained herein is gathered from sources we believe to be reliable. However we cannot guarantee its accuracy and interested persons should rely on their own enquiries.



Plans shown are only indicative of layout. Dimensions are approximate.

Wattle Grove, NSW
8/11-13 Armata Court