



## Chipping Norton, NSW

1/2 Mead Drive

**2**  
BED

**1**  
BATH

**1**  
CAR

**RealEquity**  
estate agents

Discover tranquil living in this appealing elevated ground-floor apartment nestled in the Chipping Norton lakeside. In a resort-style location, offering open-plan interiors bathed in natural light, and promising a low-maintenance lifestyle. Ideally suited for a first home buyer or an investor looking to add to their growing portfolio.

#### A Few Inviting Features:

- Open-plan living & dining room upon entry
- Lovely private balcony extending from living
- Kitchen with gas cooking & ample storage
- 2 good-sized bedrooms, both with built-ins

**\$460,000**

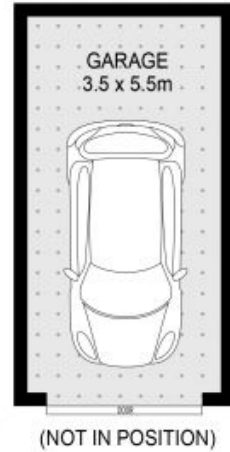
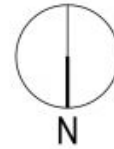
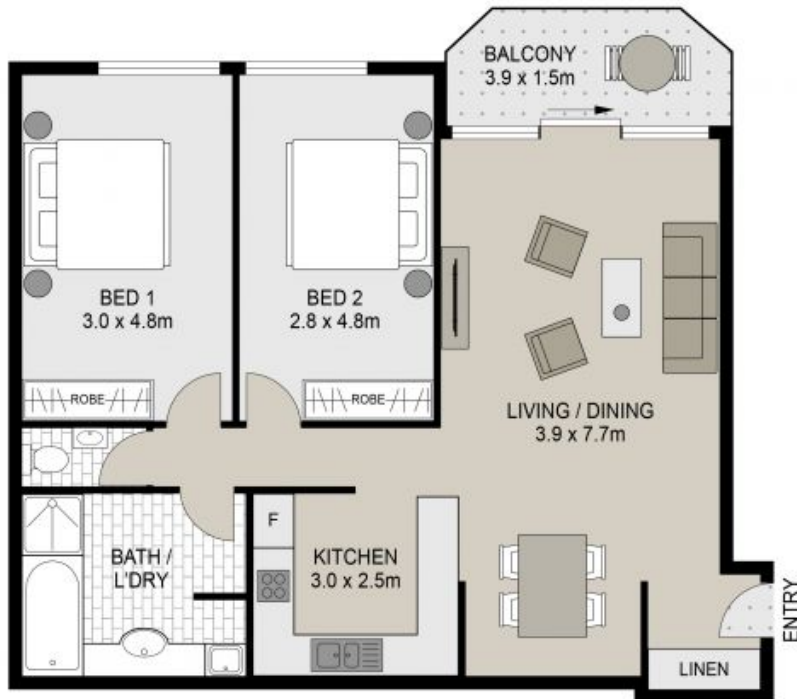
**Water Rates:** \$878/qtr (approx)

**Contact:** Ammar El Ayoubi  
02 9755 4222  
0455 245 802  
Elle Hipolito  
02 9755 4222  
0478 933 344

**Type:** Apartment

**Sold Date:** 05/12/2023

<https://www.realequity.com.au>



## 1/2 Mead Drive, Chipping Norton

Scale in metres. Indicative only. Dimensions are approximate. All information contained herein is gathered from sources we believe to be reliable. However we cannot guarantee its accuracy and interested persons should rely on their own enquiries.



**REAL  
EQUITY**  
estate agents

Plans shown are only indicative of layout. Dimensions are approximate.

**Chipping Norton, NSW**  
1/2 Mead Drive