



Chipping Norton, NSW

18 Magree Crescent

4
BED

2
BATH

2
CAR

RealEquity
estate agents

\$1,360,000

Contact:

Ammar El Ayoubi

02 9755 4222

0455 245 802

Type:

House

Sold Date:

03/05/2024

Land:

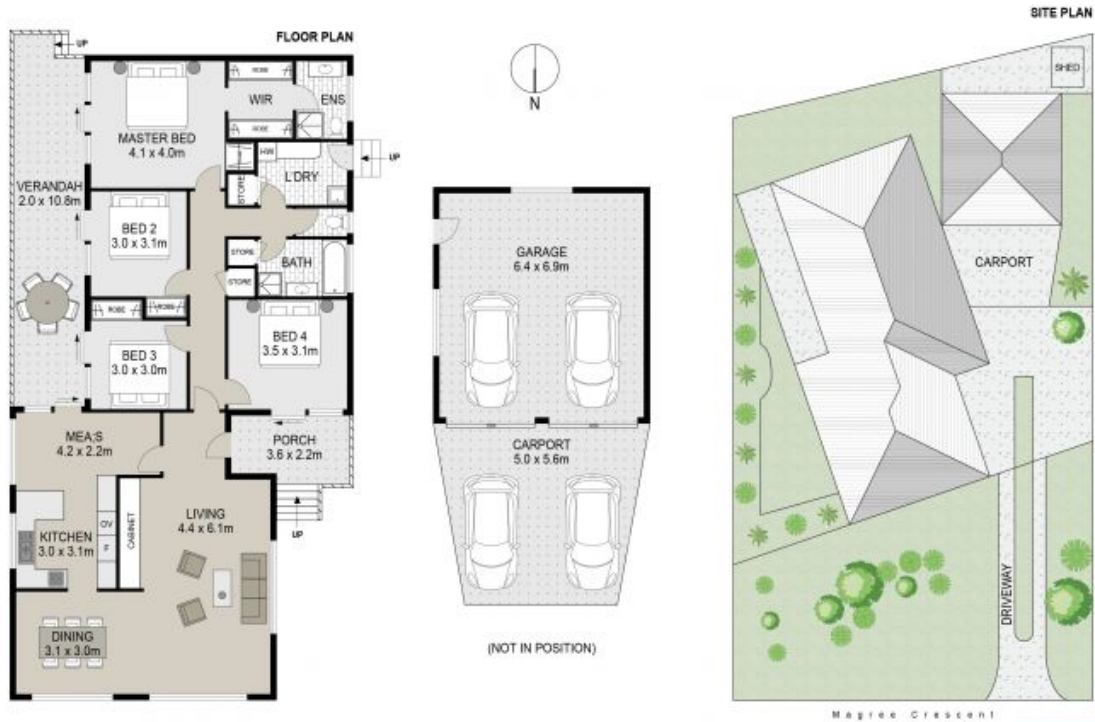
663.9m²

<https://www.realequity.com.au>

This well-presented family home boasts an appealing double brick construction, spacious interiors drenched with natural light, and a tranquil alfresco area. Offering unique character and charm, defined by its stunning exposed brick walls that seamlessly complement its updated interiors. Additionally, sitting on a 663.9 sqm block, this residence provides an excellent opportunity for developers s.t.c.a.

A Few Inviting Features:

- Spacious open-plan living & dining area
- Lovely kitchen with 20mm stone bench
- Ample storage, stainless steel appliances



18 Magree Crescent, Chipping Norton



Scale in metres. Indicative only. Dimensions are approximate. All information contained herein is gathered from sources we believe to be reliable. However we cannot guarantee its accuracy and interested persons should rely on their own enquiries.



Plans shown are only indicative of layout. Dimensions are approximate.

Chipping Norton, NSW
18 Magree Crescent