



**Chipping Norton, NSW**  
18 Magree Crescent

<b>4</b> BED	<b>2</b> BATH	<b>2</b> CAR	<b>RealEquity</b> estate agents
-----------------	------------------	-----------------	------------------------------------

This well-presented family home boasts an appealing double brick construction, spacious interiors drenched with natural light, and a tranquil alfresco area. Offering unique character and charm, defined by its stunning exposed brick walls that seamlessly complement its updated interiors. Additionally, sitting on a 663.9 sqm block, this residence provides an excellent opportunity for developers s.t.c.a.

**A Few Inviting Features:**

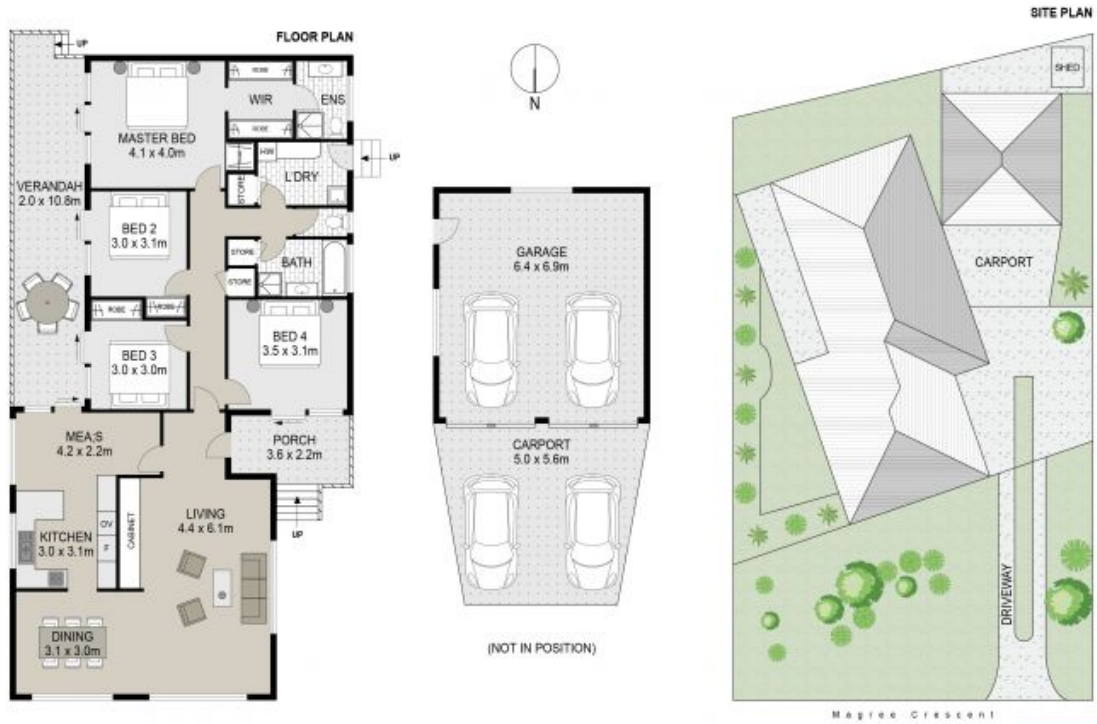
- Spacious open-plan living & dining area
- Lovely kitchen with 20mm stone bench
- Ample storage, stainless steel appliances

**\$1,360,000**

**Contact:** Ammar El Ayoubi  
02 9755 4222  
0455 245 802

**Type:** House  
**Sold Date:** 03/05/2024  
**Land:** 663.9m2

<https://www.realequity.com.au>



## 18 Magree Crescent, Chipping Norton



Scale in metres. Indicative only. Dimensions are approximate. All information contained herein is gathered from sources we believe to be reliable. However we cannot guarantee its accuracy and interested persons should rely on their own enquiries.



Plans shown are only indicative of layout. Dimensions are approximate.

**Chipping Norton, NSW**  
18 Magree Crescent