



Wattle Grove, NSW
17 Claremont Court

3 BED	2 BATH	2 CAR	RealEquity estate agents
-----------------	------------------	-----------------	------------------------------------

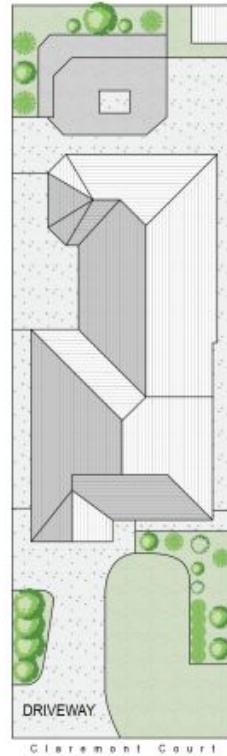
Presenting this meticulously maintained home, where cosy and sun-filled interiors welcome you at every turn. With an inviting open-plan layout, this residence offers the perfect blend of comfort and functionality, enjoy the convenience of low-maintenance living in a sought-after location.

- A Few Inviting Features:
- Spacious open-plan living & dining room
 - Sun-filled family room extending to alfresco
 - Lovely kitchen with breakfast bar & gas cooking
 - Stone bench tops & stainless steel appliances

INSPECTION CANCELLED | CONTACT AGENT

Contact: Joshua Prestia
02 9755 4222
0404 252 695
Elle Hipolito
02 9755 4222
0478 933 344

Type: House
Land: 325m2
https://www.realequity.com.au



17 Claremont Court, Wattle Grove

Scale in metres. Indicative only. Dimensions are approximate. All information contained herein is gathered from sources we believe to be reliable. However we cannot guarantee its accuracy and interested persons should rely on their own enquiries.



Plans shown are only indicative of layout. Dimensions are approximate.

Wattle Grove, NSW
17 Claremont Court