



**Wattle Grove, NSW**  
145 Australis Avenue

**4** BED **2** BATH **4** CAR



This delightful family home boasts spacious interiors and an appealing open-plan layout flooded with natural light, perfectly complimenting its updated and modern touches. Featuring a superb entertainer's alfresco area, this home offers a seamless blend of style and functionality, ideally suited for a family looking to live a lifestyle full of comfort.

**A Few Inviting Features:**

- Sun-filled formal living & dining upon entry
- Spacious open-plan family & dining area

**AUCTION 11th May @ 2pm**

**View:** Sat, 4 May 2024 @3:00 pm - 3:30 pm

**Contact:** Joshua Prestia

02 9755 4222

0404 252 695

Elle Hipolito

02 9755 4222

0478 933 344

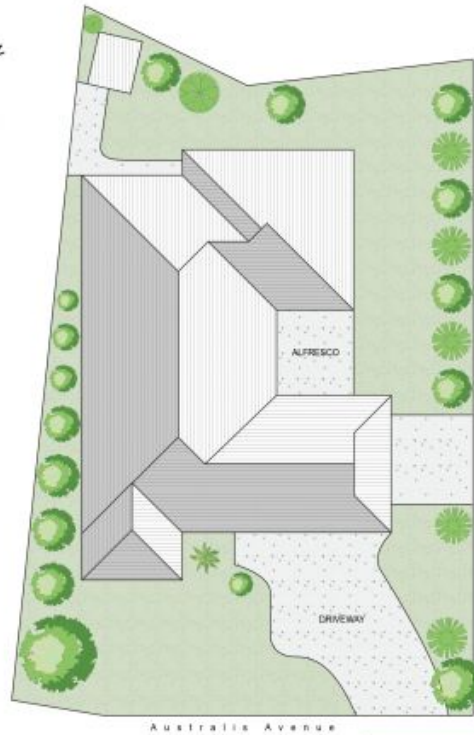
**Type:** House

**Land:** 690.7m2

**Auction:** Sat, 11 May 2024 @2:00pm

On Site

<https://www.realequity.com.au>



**REAL  
EQUITY**  
estate agents

## 145 Australis Avenue, Wattle Grove

Scale in metres. Indicative only. Dimensions are approximate. All information contained herein is gathered from sources we believe to be reliable. However we cannot guarantee its accuracy and interested persons should rely on their own enquiries.



Plans shown are only indicative of layout. Dimensions are approximate.

**Wattle Grove, NSW**  
145 Australis Avenue