



Chipping Norton, NSW

18/7 Mead Drive

2 BED
1 BATH
1 CAR

RealEquity
estate agents

FOR SALE

Council Rates: \$331/qtr (approx)

Water Rates: \$937/qtr (approx)

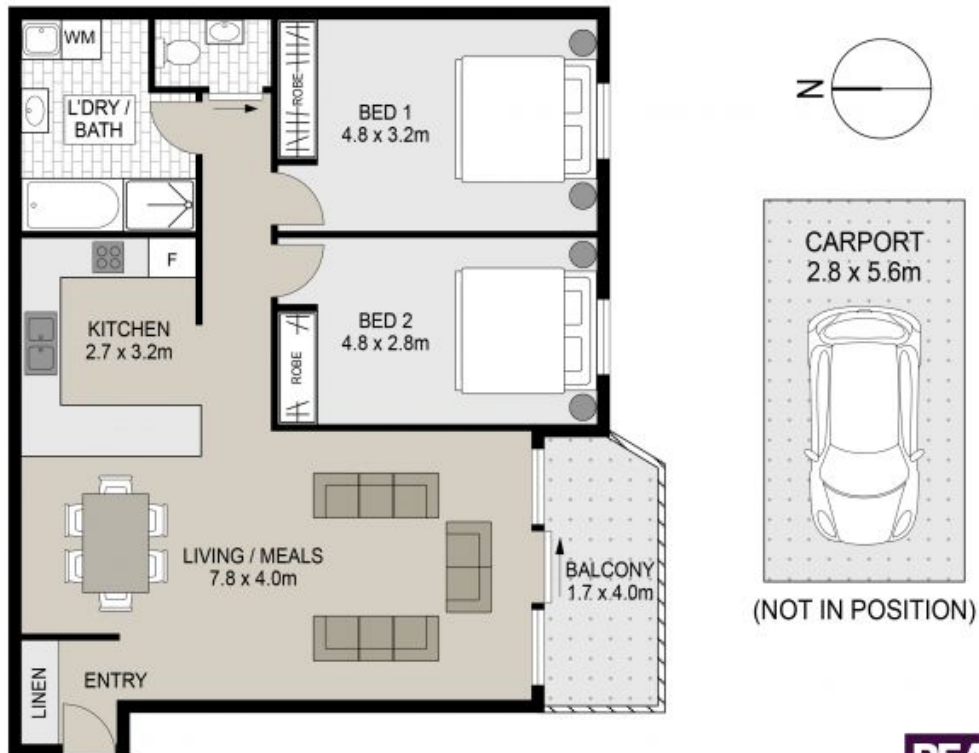
Contact: Joshua Prestia
02 9755 4222
0404 252 695
Elle Hipolito
02 9755 4222
0478 933 344

Type: Unit
<https://www.realequity.com.au>

This lovely apartment nestled in the tranquil lakeside of Chipping Norton boasts inviting and spacious living areas that perfectly complement the modern and updated interiors. Positioned on the middle floor of a well-maintained complex, and offering resort-style surroundings this home presents an ideal opportunity for a first home buyer, downsizer or an investor looking to add to their growing portfolio.

A Few Inviting Features:

- Sun-filled living & dining room upon entry
- Private balcony extending from the living



18/7 Mead Drive, Chipping Norton

Scale in metres. Indicative only. Dimensions are approximate. All information contained herein is gathered from sources we believe to be reliable. However we cannot guarantee its accuracy and interested persons should rely on their own enquiries.



**REAL
EQUITY**
estate agents

Plans shown are only indicative of layout. Dimensions are approximate.

Chipping Norton, NSW
18/7 Mead Drive