



## Liverpool, NSW

A203/15 Shepherd Street

**2** BED **2** BATH **1** CAR

**RealEquity**  
estate agents

Presenting resort-style luxury in this low-maintenance apartment, offering elegant interiors filled with natural light and lovely communal spaces, truly a perfect blend of style and comfort. Experience modern living in a convenient location, ideally suited for the first home buyer, downsizer, or investor.

#### A Few Inviting Features:

- Spacious open-plan living & dining on entry
- Contemporary kitchen with stone bench tops
- Gas cooking & stainless steel appliances

#### **SOLD | CONTACT AGENT**

**Council Rates:** \$313/qtr (approx)

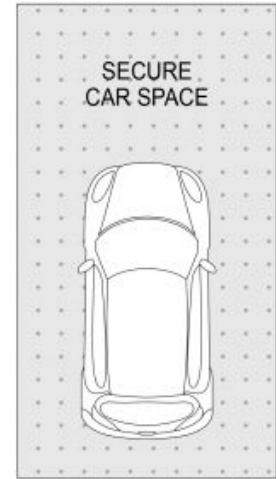
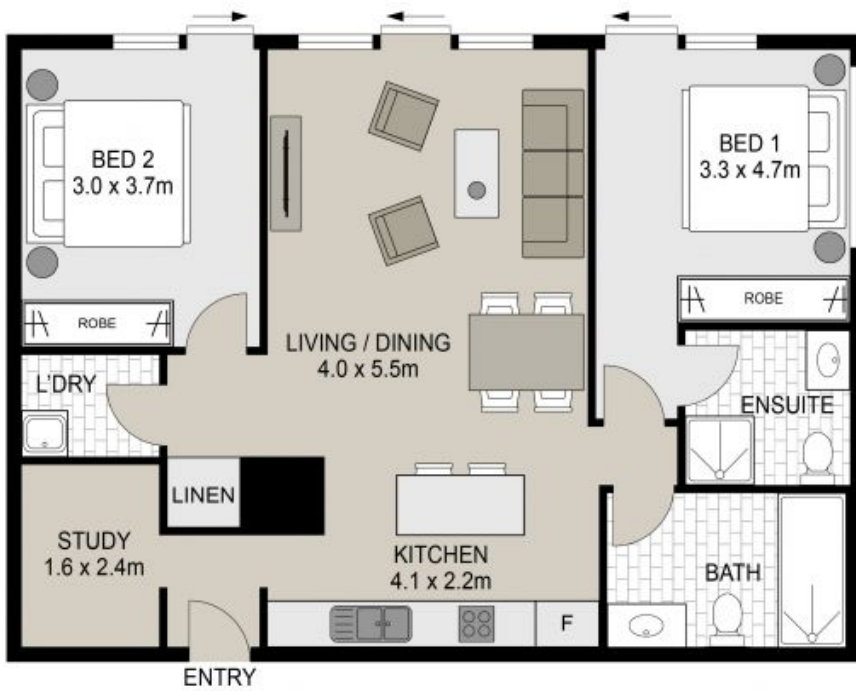
**Water Rates:** \$1,600/qtr (approx)

**Contact:** Hambi Lati  
02 9755 4222  
0402 469 556

**Type:** Apartment

**Sold Date:** 05/11/2024

<https://www.realequity.com.au>



(NOT IN POSITION)

## A203/15 Shepherd Street, Liverpool



Scale in metres. Indicative only. Dimensions are approximate. All information contained herein is gathered from sources we believe to be reliable. However we cannot guarantee its accuracy and interested persons should rely on their own enquiries.



Plans shown are only indicative of layout. Dimensions are approximate.

**Liverpool, NSW**  
A203/15 Shepherd Street