



Wattle Grove, NSW

12 Beltana Court

3 BED
2 BATH
1 CAR

RealEquity
estate agents

\$1,180,000

Contact:

Joshua Prestia

02 9755 4222

0404 252 695

Elle Hipolito

02 9755 4222

0478 933 344

Type:

House

Sold Date:

26/09/2024

Land:

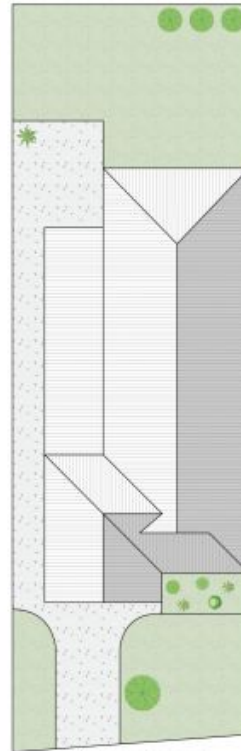
325m²

<https://www.realequity.com.au>

Enjoy the perfect blend of comfort and elegance in this meticulously maintained family home. Featuring a free-flowing floorplan drenched with natural light, creating a bright and airy atmosphere in every room. The stylish updated kitchen leads to a superb entertainer's yard, surrounded by beautifully maintained gardens that invokes a serene outdoor oasis. Ideal for a young or growing family seeking a low-maintenance lifestyle full of functionality or a savvy investor looking to expand their portfolio.

A Few Inviting Features:

- Sun filled open-plan living & dining on entry



Beltana Court



12 Beltana Court, Wattle Grove

Scale in metres. Indicative only. Dimensions are approximate. All information contained herein is gathered from sources we believe to be reliable. However we cannot guarantee its accuracy and interested persons should rely on their own enquiries.



Plans shown are only indicative of layout. Dimensions are approximate.

Wattle Grove, NSW
12 Beltana Court