



## Wattle Grove, NSW

18 Anzac Mews

**3** BED  
**1** BATH  
**1** CAR

**RealEquity**  
estate agents

**\$1,135,000**

**Contact:**

Joshua Prestia

02 9755 4222

0404 252 695

Elle Hipolito

02 9755 4222

0478 933 344

**Type:** House

**Sold Date:** 18/10/2024

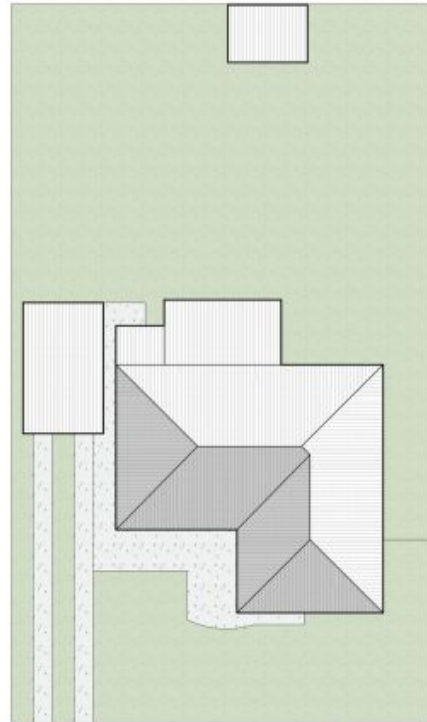
**Land:** 584.6m2

<https://www.realequity.com.au>

Presenting a wide range of possibilities with this charming home in the highly sought-after Wattle Grove; Set on a spacious 584 sqm block, this property offers incredible potential, whether you're looking to renovate and add your own personal touch, knock down and rebuild your dream home, or explore the future potential for duplex development (s.t.c.a).

A Few Inviting Features

- Spacious sun-filled living room on entry
- Open-plan dining room & kitchen area
- Well-maintained kitchen with gas cooking



## 18 Anzac Mews, Wattle Grove



Scale in metres. Indicative only. Dimensions are approximate. All information contained herein is gathered from sources we believe to be reliable. However we cannot guarantee its accuracy and interested persons should rely on their own enquiries.



Plans shown are only indicative of layout. Dimensions are approximate.

**Wattle Grove, NSW**  
18 Anzac Mews